

SAMSUNG ELECTRONICS' RESPONSIBLE MINERALS REPORT 2026



Samsung Electronics' Declaration on Conflict Minerals

Respecting and protecting human rights is a top priority for Samsung Electronics Co., Ltd. ("Samsung"), and this commitment is codified and enforced through our Code of Conduct.

We do not tolerate human rights violations or environmental damage caused by mineral mining in conflict-affected and high-risk areas worldwide. We are committed to eliminating such violations and abuses, including child exploitation and sexual violence associated with mineral mining, and minimizing any harm to the health and safety of workers at mining sites around the globe.

For this reason, we ensure that our entire supply chain complies with the OECD¹⁾ Due Diligence Guidance for Responsible Supply Chains of Minerals from Conflict-Affected and High-Risk Areas (hereinafter referred to as the "OECD Due Diligence Guidance"). This requires all of our business partners to follow our Supplier Code of Conduct based on internationally accepted standards.

We work together with other global companies by taking part in umbrella organizations, such as the Responsible Business Alliance's (RBA) Responsible Minerals Initiative (RMI) and the European Partnership for Responsible Minerals (EPRM), to eliminate conflict minerals and support responsible minerals sourcing.

Through these efforts, we have established a conflict-free minerals management system that prohibits the use of minerals sourced from conflict-affected and high-risk areas in 10 African countries, including the Democratic Republic of the Congo. Additionally, we only use minerals from smelters certified by global, independent third-party organizations.

1) OECD Due Diligence Guidance for Responsible Supply Chains of Minerals from Conflict-Affected and High-Risk Areas

About this report

Purpose

In recent years, there has been increasing public attention on minerals such as tantalum, tin, tungsten, gold, and cobalt that are often sourced through illegal means from conflict-affected and high-risk areas. This heightened scrutiny has created a growing call for corporate action on responsible minerals sourcing. We fully acknowledge the significance of acting responsibly as a global citizen in terms of our minerals sourcing.

In the manufacturing of our products, we incorporate a diverse range of components that contain minerals like tantalum, tin, tungsten, gold, and cobalt. Throughout this entire process, we are committed to establishing a responsible supply chain management system. We actively request our business partners to join us in our efforts to promote human rights and environmental protection in conflict-affected and high-risk regions. The purpose of this Responsible Minerals Report is to highlight our initiatives as a global company and progress toward creating a sustainable future for both humanity and the planet.

Scope and Period

All products commercially marketed to consumers and all materials directly purchased for manufacturing by Samsung Electronics are managed on a yearly basis. Accordingly, this report covers our activities from January 1 through December 31, 2025.

Reporting Target

Suppliers and Product Group

All materials and components sourced from our suppliers and their subcontractors associated with our products manufactured and commercially marketed, regardless of sales region, are held to our standards for conflict minerals.

Suppliers providing equipment, MRO (maintenance, repair, and operations), and other materials indirectly incorporated into the products are not considered within the reporting target. Each supplier is managed on a per facility basis.

	* No. of target suppliers (number of suppliers, based on their facilities)				
	2021	2022	2023	2024	2025
Suppliers	2,391	2,463	2,482	2,383	2,358
DX	2,045	2,116	2,141	2,056	2,078
DS	346	347	341	327	280

* Key products

Business divisions	Key products
DX (Device eXperience)	TVs, Monitors, Refrigerators, Washers, Air conditioners, HHP, PCs, Network systems, Ultrasound systems, Digital radiography
DS (Device Solutions)	DRAM, SSDs, NAND flash, Mobile Aps, Image sensors

Minerals

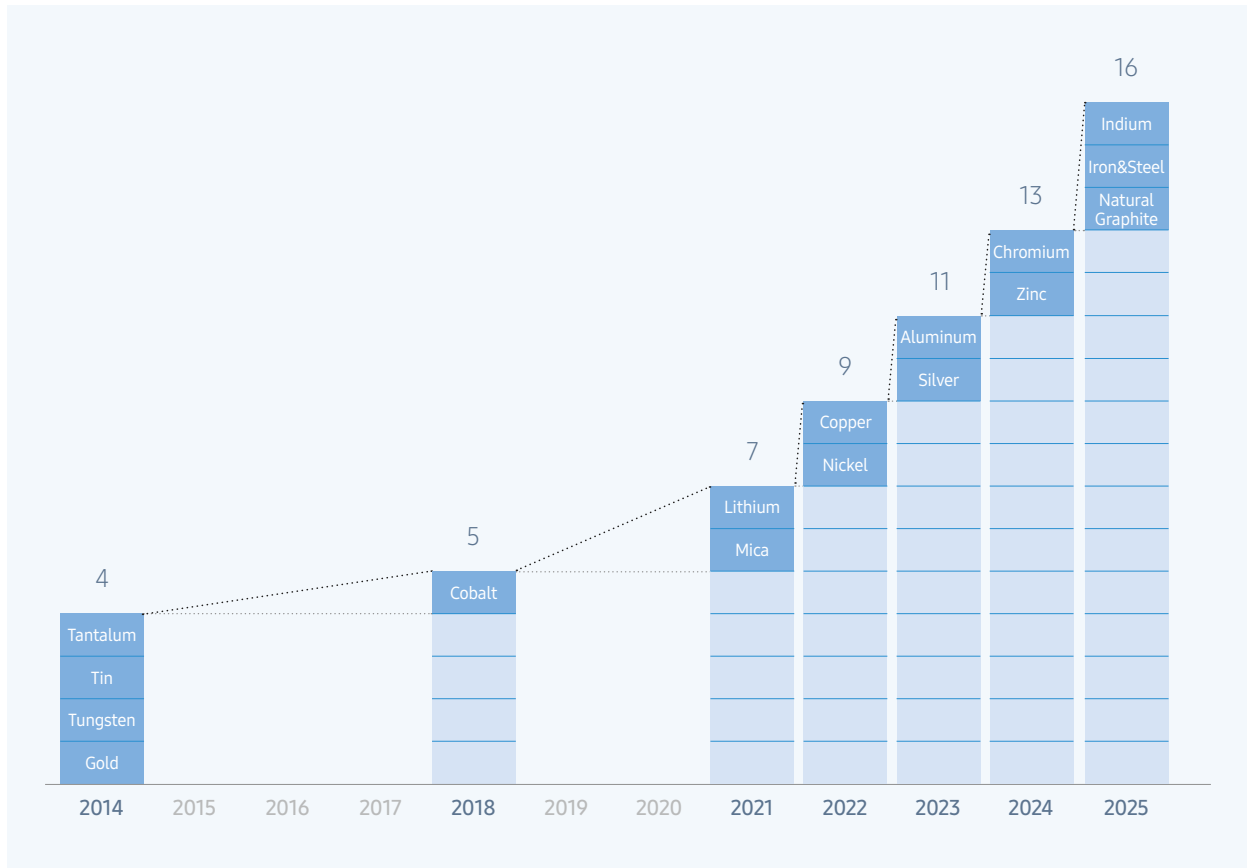
We strive to avoid the use of any illegally mined minerals from conflict-affected and high-risk areas and continuously monitor the minerals sourcing practices of our suppliers by expanding the scope of our monitoring efforts.

To this end, through 2021, we monitored a total of seven different minerals – four conflict minerals (tantalum, tin, tungsten, gold) and three minerals (cobalt, molybdenum, lithium). Starting in 2022, we added two minerals (copper, nickel), followed by two (aluminum, silver) more in 2023 and another two (chromium, zinc) in 2024, resulting in a total of 13 minerals under our oversight.

Since 2025, we have been continuously expanding the scope of mineral management by expanding additional management of Indium, Iron&Steel, and Natural Graphite.

We have engaged in expanded due diligence in a voluntary way to maintain our focus as a responsible business.

※ No. of minerals under oversight by year



※ Main Minerals Under Oversight

Conflict Minerals

Conflict minerals include tantalum, tin, tungsten, and gold (3TG) that are illegally mined in the 10 African countries of the Democratic Republic of the Congo, the Republic of Congo, the Central African Republic, South Sudan, Uganda, Rwanda, Burundi, Tanzania, Zambia, and Angola. The characteristics of each mineral are as follows.

Minerals	Main Production Sites	Main Applications	Major Issues
Tantalum Ta	African countries such as the Democratic Republic of the Congo, Rwanda, South Sudan, Mozambique * Raw minerals: Tantalite, Columbite, etc.	Manufacturing of electronic devices, including electrolytic capacitors, semiconductors, and parts for the aerospace industry Particularly critical in high-tech products such as smartphones, computers, and electric vehicles	Child labor related to mining activities due to unstable political situations and disorder, as well as environmental destruction, in some African areas
Tin Sn	China, Indonesia, Bolivia, Malawi, South Africa, etc. * Raw minerals: Cassiterite	Various industries, with its most well-known application being solder, an alloy of tin Additionally, soldering electronic products, can manufacturing, cosmetics, paints, and plastic additives Tin oxide used in glass manufacturing	Ecosystem destruction, water pollution, and child labor from mining activities at some mines
Tungsten W	China, Russia, Canada, Bolivia, etc. * Raw minerals: Scheelite, Wolframite	Various industries thanks to its high strength and heat resistance at high temperatures and pressures Particularly used in the form of carbides or chemical catalysts and as an essential material in the electrical and electronics industry for manufacturing light bulbs and semiconductors	Environmental destruction, ecological impact, and violation of workers' rights during mining activities
Gold Au	China, Australia, Russia, U.S., Canada, etc.	Circuits and connectors of electronic products, as well as in the manufacturing of electronic devices due to its stability and electrical conductivity Also used as an underlying asset for investment and financial products	Environmental destruction during mining activities due to the use of chemicals, soil contamination, and water pollution Concerns about workers' rights and safety in some areas

※ Main Minerals Under Oversight

Other Minerals in Focus

Samsung Electronics focuses on other minerals beyond 3TG if they are related to global issues such as child labor, human rights, and environmental issues, including conflict minerals. The characteristics of each mineral are as follows.

Minerals	Main Production Sites	Main Applications	Major Issues
Cobalt Co	Democratic Republic of the Congo, Cambodia, Canada, Australia, Russia, etc. * Raw material: Cobaltite, etc.	Manufacturing of lithium-ion batteries for mobile devices, electric vehicles, and smartphones Also used in alloys, magnets, and the chemical industry	Labor issues, environmental destruction, and human rights problems such as child labor arising from cobalt mining in some regions of the Democratic Republic of the Congo
Mica -	Russia, India, Madagascar * Raw materials: Muscovite, Phlogopite, Biotite, Lepidolite, Paragonite	Mica flakes are used in vacuum tubes, commutators for electric motors, insulation materials, thermal insulation materials, and furnace windows, while mica sheets are utilized in decorative paints, thermal insulation materials, insulation materials, and lightweight building materials. Lithium mica is used for lithium metal extraction, special lubricants, and as a raw material in manufacturing	Soil and water pollution, as well as workers' rights and safety issues during mining activities
Lithium Li	Australia, Chile, Argentina, China, etc.	Various applications such as mobile devices, electric vehicles, and solar energy storage systems as a major component of lithium-ion batteries, as well as other fields such as medical devices, the aerospace industry, and nuclear reactor control rods	Environmental destruction, including water pollution, soil contamination, and ecosystem damage resulted from mining and extraction in some regions Concerns about the negative impact of chemicals used in the lithium production process on the environment and human health
Copper Cu	Chile, China, Peru, U.S., India, etc.	Primarily used in the electrical and electronics industries, as essential for the manufacturing of wires, electrical cables, electric motors, and electronic products Widely used for plumbing, heating systems, and building materials in the construction industry	Soil contamination, water pollution, ecosystem destruction from mining activities, and concerns about working conditions and safety
Nickel Ni	Indonesia, Philippines, Russia, Canada, Australia, etc.	Primarily used as one of the main components in stainless steel and alloys Stainless steel widely used for its corrosion resistance and ability to maintain high strength in high-temperature environments Used in batteries, automotive exhaust treatment systems, aircraft parts, and the chemical industry	Soil contamination, water pollution, ecosystem destruction from mining activities, and concerns about working conditions and safety
Aluminum Al	Australia, China, Guinea, Brazil, etc. * Raw material: Bauxite	Being lightweight yet strong and resistant to corrosion, used in various industries such as aircraft manufacturing, automotive manufacturing, the construction industry, and beverage can production	Environmental destruction due to bauxite mining, as well as environmental issues such as air pollution due to significant energy consumption during the aluminum smelting process
Silver Ag	Mexico, China, Peru, Russia, Australia, etc.	With high electrical and thermal conductivity, used in the manufacturing of electronic components, electrical conductors, and audio and video devices Silver alloys widely used in the casting and molding industry	Soil contamination, water pollution, ecosystem destruction from mining activities, and concerns about working conditions and safety
Chromium Cr	South Africa, India, Russia, Kazakhstan, China, etc. * Raw Materials : Chromite	Stainless steel, alloy steel, coatings, and the chemical industry, as well as for use in electroplating materials	The mining and processing of chromium may lead to environmental pollution and health issues for workers
Zinc Zn	China, Peru, Indonesia, Australia, India, etc. * Raw Materials : Sphalerite	Electroplating, alloys, batteries, the chemical industry, and galvanization for corrosion protection of steel structures	The mining and processing activities can result in soil and water contamination, as well as safety concerns for workers
Indium In	China, Korea(Republic of), Japan, Canada, etc * Raw Materials : Sphalerite	Electroplating, alloys, batteries, the chemical industry, galvanization for corrosion protection of steel structures, and indium tin oxide (ITO) for touchscreens, LCD panels, soldering, and bearing alloys.	Concerns about heavy metal contamination during extraction and refining processes, labor condition improvements, and fair trade-related issues.
Iron & Steel	China, India, Japan, USA, Russia, etc * Raw Materials : Iron Ore	Applications across construction, automotive, and home appliances industries.	Issues related to carbon emissions in steel production processes and the protection of safety and labor rights for steel industry workers.
Natural Graphite	China, Brazil, India, DPRK, Canada, etc * Raw Materials : Graphite Ore	Lithium-ion battery anode materials, high-temperature refractory products, solid lubricants, and grease materials.	Air and water pollution from graphite mining, child labor issues, and concerns about working conditions.

Samsung Electronics' Responsible Minerals Management Roadmap

We continue to monitor mineral-related regulations as well as the demands from various external stakeholders. As part of this ongoing process, we are actively establishing the list of minerals that necessitate comprehensive oversight. Considering external demands specific for each mineral, we distinctly manage minerals based on their classification, while consistently expanding the scope of minerals we monitor.



Samsung Electronics' Policy on Responsible Minerals Sourcing

We are committed to contributing to a more sustainable future for the public as well as our planet. We believe that establishing a responsible supply chain and encouraging the participation of our suppliers is critical to minimize human rights violations and environmental degradation.

Based on the OECD Due Diligence Guidance, we ensure ethical and responsible management of all minerals used in our products. Additionally, we mandate our suppliers to adhere to the Samsung Electronics Supplier Code of Conduct, which is grounded in international industry standards. We also actively engage other companies and the relevant industry stakeholders to promote responsible sourcing of minerals through initiatives such as RBA, RMI, and EPRM.

Conflict Minerals

We are aware that in some areas of the 10 African countries, including the Democratic Republic of the Congo, standards to protect the environment and human rights do not adequately safeguard all rights. As a result, we have prohibited the use of conflict minerals such as tantalum, tin, tungsten, and gold that are mined illegally in conflict regions. To ensure that our suppliers are held to the highest standards, we conduct thorough reviews of the minerals used in our products as part of our supply chain management process.

To establish a system for sourcing of conflict-free minerals, we use a due diligence process for conflict minerals that is in line with the OECD Due Diligence Guidance. Additionally, we require that our suppliers work only with smelters that have received RMAP (Responsible Minerals Assurance Process) certifications, and we halt transactions that include any minerals provided by non RMAP-conformant smelters. By only using RMAP-certified smelters, we can ensure that the minerals we are sourcing have been mined ethically regardless of origin. However, we do not outright ban sourcing from any specific regions, including Africa, as this may undermine the progress that is being made to mine responsibly.

We also provide suppliers with clear guidelines, training and education support to raise their awareness of conflict minerals. We conduct regular inspections on the use of conflict minerals throughout our supply chain by reviewing the information submitted by suppliers and by carrying out on-site inspections as needed for additional verification.

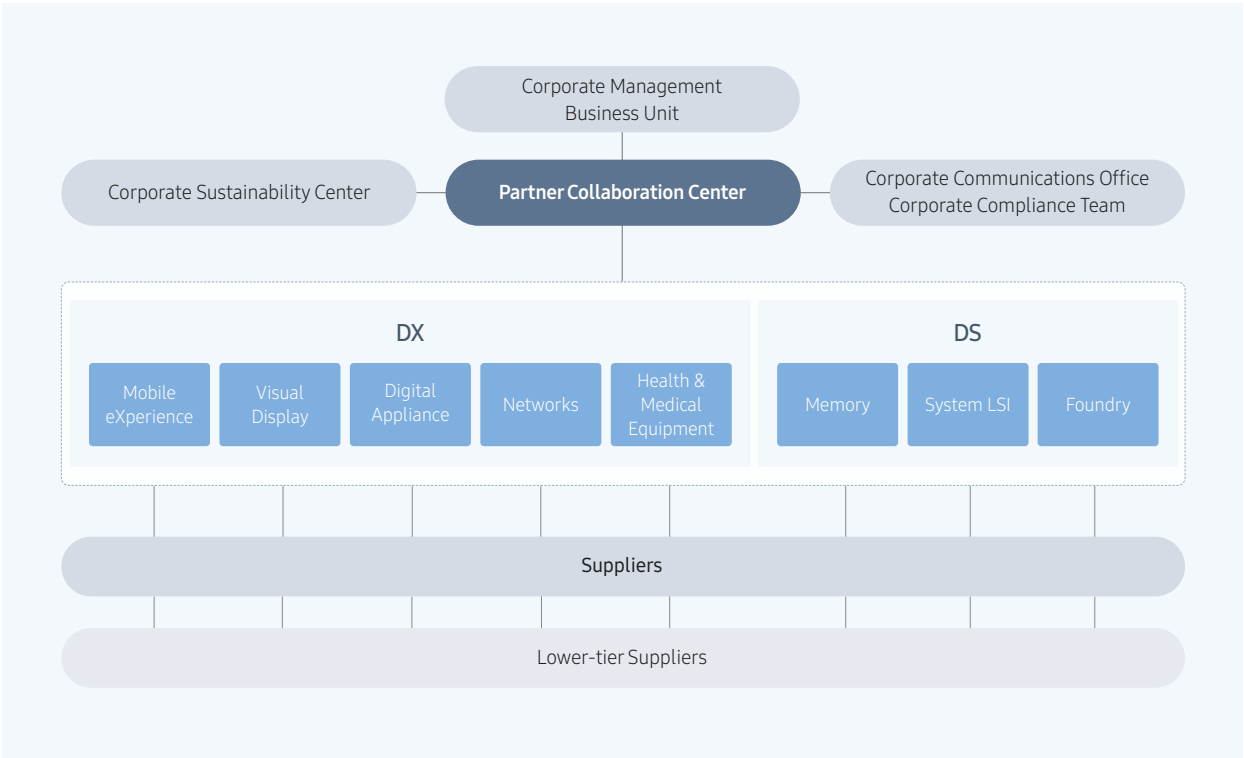
Responsible Minerals

In addition to our commitment to conflict-free minerals, we also extensively manage our supply chain to monitor any mineral mining associated with human rights violations or environmental destruction. In particular, we ensure that the issue of underage workers in cobalt mines in the Democratic Republic of the Congo is managed in accordance with the OECD Due Diligence Guidance. We are also mindful of other potential issues in mining and continually conduct diligent monitoring of these matters as well as collaborating with global organizations to consider additionally required responses.

We work to ensure that mining in our supply chain is not used for funding conflicts and is carried out in ways that respect human rights and the environment, while being mindful of social responsibilities.

Responsible Minerals Management Organization

The Partner Collaboration Center, under the leadership of the Corporate Management Business Unit, is responsible for risks associated with responsible minerals sourcing. In addition, personnel dedicated to responsible minerals in each business division oversee and monitor conflict mineral risks within their respective divisions, as well as those involving their suppliers. The Center also closely cooperates with relevant entities within the company-wide risk management system, including the Corporate Sustainability Center, Corporate Compliance Team, and Corporate Communications Office.

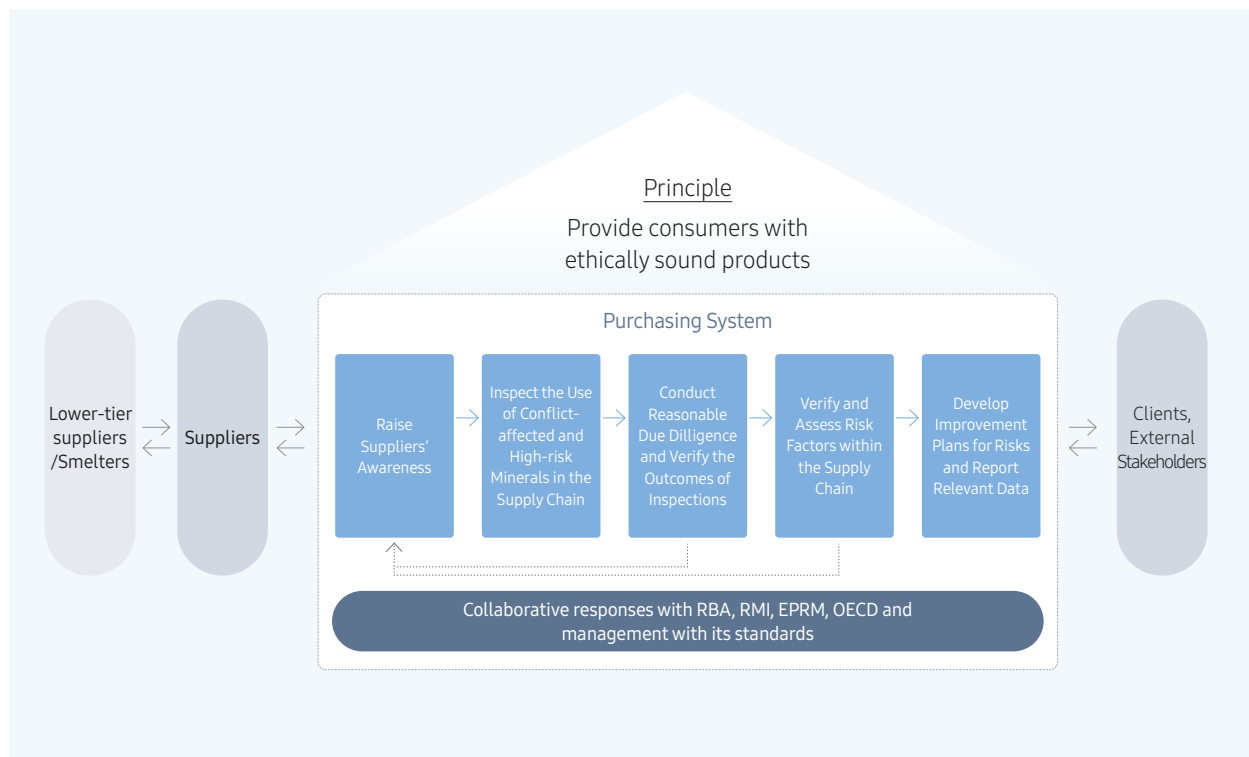


* DX: Device eXperience * DS: Device Solutions

Responsible Minerals Management Process

Management System






We operate our minerals management process in accordance with the OECD Due Diligence Guidance. In addition, we proactively communicate the progress and outcomes of our management efforts to different stakeholders, including our customers. We also engage in global coalitions and partnerships to collaborate on addressing conflict and other minerals and to amplify the benefits of responsible sourcing around the world .



Management Procedure

We ensure that the minerals used in our products have been mined ethically in accordance with the OECD Due Diligence Guidance and require that our suppliers adopt the Guidance as well.

Samsung Electronics' Responsible Minerals Management Process

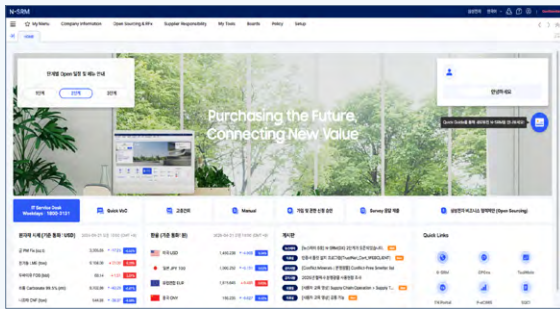
 Step 1	Raise Suppliers' Awareness	<ul style="list-style-type: none">- Require that all first-tier suppliers commit to banning the use of conflict-affected and high-risk minerals by submitting a written pledge- Distribute the conflict-affected and high-risk minerals management guide and support working-level training- Require that lower-tier suppliers expand their policies to ban the use of conflict-affected and high-risk minerals and to source ethically and responsibly
 Step 2	Inspect the Use of Conflict-Affected and High-Risk Minerals in the Supply Chain	<ul style="list-style-type: none">- Monitor data on all first-tier suppliers' use of conflict-affected and high-risk minerals as well as smelters' use of such minerals in the supply chain
 Step 3	Conduct Reasonable Due Diligence and Verify the Outcomes of Inspections	<ul style="list-style-type: none">- Conduct on-site inspections for the verification of data submitted by suppliers
 Step 4	Verify and Assess Risk Factors Within the Supply Chain	<ul style="list-style-type: none">- Categorize suppliers into four rating groups based on inspection results
 Step 5	Develop Improvement Plans for Risks and Report Relevant Data	<ul style="list-style-type: none">- Restrict transactions with suppliers that work with any smelters not certified by third-party organizations- Recommend smelters in the supply chain to become third-party certified

Samsung Electronics' Activities by Stage

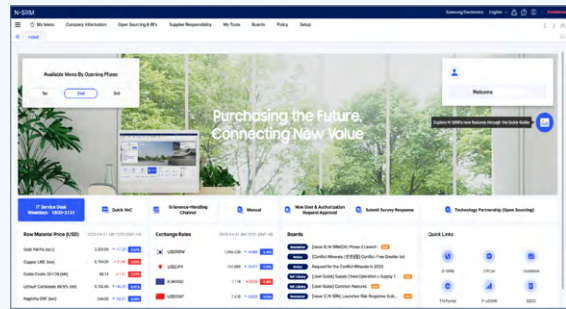
Step 1: Raise Suppliers' Awareness

We require that all of our suppliers pledge in writing not to use minerals that contribute to human rights violations and environmental problems in conflict-affected and high-risk areas and monitor their practices through an integrated system.

※ Samsung Electronics' Purchasing System



Korean



English

(click for URL)

[Samsung Electronic's Purchasing System website](#)

In line with our responsible minerals sourcing policy, we demand that our suppliers extend the ban on the use of minerals from conflict-affected and high-risk areas to their own suppliers.

※ Declaration of non-use (DNU) of conflict minerals for suppliers



Korean



English



Chinese

As part of our conflict-free minerals management, we provide both online and offline training for our employees who are responsible for global procurement. The online courses on conflict minerals are mandatory for all procurement employees. In 2025, a total of 92 procurement employees successfully completed the training program on the conflict and responsible minerals policy and our management process.

We also focus on training and guiding our suppliers. Our Conflict Minerals Management Guidance includes the conflict minerals policy that we share with our suppliers. In 2025, in a bid to strengthen awareness among our suppliers, we provided training sessions to a total of 495 employees representing 454 different suppliers. These sessions covered various areas, such as our conflict minerals policy, instructions on how to use the conflict minerals management system, and the process required to become an RMAP-certified smelter. Notably, we conducted additional training programs for suppliers that displayed vulnerabilities during our on-site assessments, aiming to support them in effectively addressing such gaps.

※ Conflict minerals training completed (2021 - 2025) (persons)

Year	2021	2022	2023	2024	2025
Total	551	693	659	568	587
Samsung Electronics	181	219	189	99	92
Suppliers	370	474	470	469	495

Step 2: Inspect the Use of Conflict-Affected and High-Risk Minerals in the Supply Chain

Using RMI's templates such as the Conflict Minerals Reporting Template (CMRT), Extended Minerals Reporting Template (EMRT), and AMRT (Additional Minerals Reporting Template), we collected our suppliers' data regarding conflict and high-risk minerals, as well as other information on smelters within the supply chain, through the Samsung Electronics' Purchasing System. This enabled us to investigate the smelters and origins of conflict and high-risk minerals for all partner companies. In addition, we required our suppliers to extend the ban on conflict minerals to their own suppliers in accordance with our conflict minerals policy.

※ Submission status of surveys of suppliers

(number of supplier facilities)

Year	2021	2022	2023	2024	2025
No. of suppliers	2,391	2,463	2,482	2,383	2,358
Inspection rate	100%	100%	100%	100%	100%
3TG-using suppliers	871	885	904	900	918
Number of companies that completed the survey	2,391	2,463	2,482	2,383	2,358

※ Status of smelters within the supply chain (2021 - 2025)

(number of smelters)

Year	2021	2022	2023	2024	2025
Tantalum	38	36	42	41	40
Tin	55	59	67	74	60
Tungsten	40	39	33	37	38
Gold	107	99	91	91	93
Cobalt	35	42	42	49	66
Mica	10	19	26	26	38
Lithium	16	11	8	101	46
Copper	-	33	90	388	398
Nickel	-	22	30	99	114
Aluminum	-	-	27	66	68
Silver	-	-	10	13	17
Chromium	-	-	-	17	17
Zinc	-	-	-	9	11
Indium	-	-	-	-	1
Iron & Steel	-	-	-	-	7
Natural Graphite	-	-	-	-	47

Step 3: Conduct Reasonable Due Diligence and Verify the Outcomes of Inspections

Following an immediate internal review of the data submitted by suppliers, in 2025, we conducted on-site audits on 219 global suppliers. These audits were carried out to ensure the reliability of their submitted data, as well as to verify the effective implementation of conflict minerals-related policies.

For the audits conducted in 2025, we employed the same criteria that are used annually to select the target suppliers. This included new trading companies, underperformers from the previous year, and suppliers that provided inadequate responses for the 2025 survey.

※ No. of on-site supplier audits (2021 - 2025) (number of on-site audits)

Year	2021	2022	2023	2024	2025
Total	493	438	315	202	219
DX	449	386	281	178	203
DS	44	52	34	24	16

* From 2020 to 2022, audits were conducted through the 'contact-free' review of evidential documents due to COVID-19. However, starting in 2023, we conducted face-to-face on-site inspections for suppliers in South Korea, and from 2024, we expand these inspections to all global regions.

※ No. of on-site audits by region in 2025 (number of on-site audits)

Total	Korea	China	Other Asia	the Americas	Europe	Africa
219	28	29	101	40	16	5

According to the results, 97.5% of the suppliers maintained effective management controls, complying with at least 80% of the audit standards. Specifically, 98.0% of the suppliers conducted inspections on their lower-tier suppliers in accordance with RMI standards, and 98.0% reported the inspection results to Samsung Electronics without any data omissions. These findings reflect the strong quality management of our suppliers in addressing conflict minerals information with their lower-tier suppliers.

In addition, we implemented follow-up improvement measures to assist suppliers identified with vulnerabilities during the inspection to help them address their gaps. As a result, all suppliers eventually satisfied the criteria for their management of conflict minerals. In addition, we will continue to monitor the progress of the suppliers that were initially rated "insufficient" in 2025 by including them in our on-site audits once again in 2026.

All information regarding our on-site audits, including historical records and results, is systematically managed and archived through our purchasing system.

※ Smelter On-Site Inspection Results

Samsung Electronics piloted on-site inspections of raw material suppliers to eradicate human rights abuses, such as child labor exploitation and environmental destruction during the mineral mining process, and to protect the health and safety of mining workers. The Responsible Minerals Assurance Process (RMAP) program was utilized to verify whether minerals used in domestic smelters are sourced from Conflict and High-Risk Areas (CAHRA), where issues such as human rights violations may occur, and to explore joint response measures for global mineral issues. In 2026, an assessment was conducted on Korea Zinc, with plans to continue this process in the future.

· Korea Zinc (Gold, CID002605) : Korea, Republic of

Korea Zinc, established in 1974, is a South Korean non-ferrous metal smelting company. Its headquarters is based in Seoul, and it primarily produces various non-ferrous metals, including zinc, lead, gold, silver, and copper. Korea Zinc is recognized as one of the world's largest zinc producers, supplying high-quality metal products to global markets. The company actively invests in advanced technology development and research while striving for environmental protection and sustainable management. Korea Zinc continues to enhance its competitiveness in the global market, emphasizing customer satisfaction and social responsibility.

* <https://www.koreazinc.co.kr>

※ Conducting Pilot On-Site Inspections for Cobalt

In addition to conflict minerals, Samsung Electronics is expanding on-site inspections for responsible management of minerals that have become global issues. Accordingly, in 2025, pilot on-site inspections were conducted at some domestic partner companies to assess their cobalt management status, ensuring reliable management within the supply chain. In 2025, on-site inspections were carried out at four companies: Inji Display, KSD, Modainochip, and Comtech Surge. The program is planned to be expanded in the future.

Step 4: Verify and Assess Risk Factors Within the Supply Chain

We manage the responsible minerals information provided by our suppliers through our purchasing system and track information on conflict minerals in real-time by each material unit purchased.

If a supplier fails to submit the required information for a particular material or includes a mineral sourced from a non-RMAP-certified smelter, we immediately block their access to the procurement system. Simultaneously, we send a notification email to both the person of contact from Samsung Electronics and the supplier involved in responsible minerals procurement to ensure that they are aware of the issue and take action for improvement. We then send out periodic notices and follow-up reminders to encourage prompt action.

Moreover, we conduct on-site audits on suppliers identified with vulnerabilities in their management standards and processes. Based on the credibility of the submitted data and the actual on-site conditions, we implement tailored follow-up measures. We instruct suppliers with lower rankings to submit supporting documents and/or provide them with on-site guidance when necessary. Through such activities, we assist our suppliers in the review of their conflict minerals policies, organizational management, and conflict minerals information management systems. This helps them improve in their areas of vulnerability, which in turn enables them to enhance their management capabilities.

As a result of our efforts, in 2025, all product categories manufactured by Samsung Electronics are in full compliance with our Conflict Minerals Management Guidance.

※ Conflict minerals compliance rate by product category

	Mobile eXperience	Visual Display	Digital Appliance	Networks	Health & Medical Equipment	Memory	System LSI	Foundry
Key product category	Smart phones, tablets	TVs, monitors	Refrigerators, laundry machines	Repeaters, modem chips	Ultrasound systems, Digital radiography	DRAM, SSD	APs, CMOS	Mobile SoC
Compliance rate	100%	100%	100%	100%	100%	100%	100%	100%

Step 5: Develop Improvement Plans for Risks and Report Relevant Data

We require that all of our suppliers pledge to avoid the use of conflict minerals. We maintain real-time monitoring of each material through our purchasing system and block any materials from access to our supply chain if they are found to use minerals sourced from non-RMAP-certified origins.

We also conduct regular monitoring of the RMI website to stay informed of any changes in the RMAP list of certified smelters and to promptly update the information in our purchasing system accordingly. If any materials are found to be associated with uncertified smelters, we take immediate action by suspending the contracts and share this information with relevant suppliers and business divisions in order to encourage and support the necessary improvements. In 2025, a total of 12 smelters were removed from the RMAP-conformant list, and we promptly communicated this information to 540 relevant suppliers, ensuring that they took appropriate follow-up measures regarding the affected smelters.

※ Smelters removed from the RMAP-conformant list in 2025

Minerals	Reference No.	Smelter Name
Tantalum	CID002547	QSIL Metals Hermsdorf GmbH
Tungsten	CID002513	Hunan Shizhuyuan Nonferrous Metals Co., Ltd.
Tungsten	CID004068	Plansee Composite Materials GmbH
Tin	CID000309	PT Aries Kencana Sejahtera
Tin	CID001231	Jiangxi New Nanshan Technology Ltd.
Tin	CID002158	Yunnan Chengfeng Non-ferrous Metals Co., Ltd.
Tin	CID003582	Fabrica Auricchio Industria e Comercio Ltda.
Tin	CID003486	CRM Fundicao De Metais E Comercio De Equipamentos Eletronicos Do Brasil Ltda.
Gold	CID001955	Torecom
Gold	CID002762	L'Orfebre S.A.
Gold	CID002779	Ogussa Osterreichische Gold- und Silber-Scheideanstalt GmbH
Gold	CID003615	WEEEREFINING

We have established a range of voice of customer channels and provided 24/7 support to assist suppliers in resolving their feedback related to conflict minerals. In 2025, we received and handled 296 cases in total.

※ No. of VoC cases handled in 2024

	(number of cases)						
	Total	Survey	Operating System	Smelter	Data transmission	Letter of consent	Other
Total	296	194	44	22	12	2	22
Conflict minerals	244	168	34	16	10	2	14
Responsible minerals	52	26	10	6	2	-	8

We conduct thorough verification to determine the presence of any conflict minerals in our products and to trace their origins using the smelter information submitted by our suppliers. In cases where the country of origin is uncertain or the smelters are not certified by RMAP, we investigate whether conflict minerals have been used and request that such smelters obtain RMAP certification. As a result of these efforts, all of our suppliers sourced minerals exclusively from RMAP-certified smelters as of the end of 2025.

* Please refer to the attachment for the detailed smelter list.

※ Conflict minerals-related RMAP certification of smelters in the supply chain

(number of smelters as of 2025)

	Total	Tantalum	Tin	Tungsten	Gold
No. of smelters	231	40	60	38	93
RMAP certification rate	100%	100%	100%	100%	100%

※ Responsible minerals-related RMAP certification of smelters in the supply chain

(number of smelters as of 2025)

	Cobalt	Mica	Lithium	Copper	Nickel	Aluminum	Silver	Chromium	Zinc	Indium	Iron & Steel	Natural Graphite
No. of smelter	66	38	46	398	114	68	17	17	11	1	7	47
Number of RMAP certified smelters	66	6	13	14	27	0	4	0	2	0	0	0
RMAP certification rate	100%	16%	28%	4%	24%	0%	24%	0%	18%	0%	0%	0%

* Samsung Electronics conducts annual survey on the responsible sourcing of Cobalt, Mica, Lithium, Copper, Nickel, Aluminum, Silver, Chromium, Zinc, Indium, Iron&Steel and Natural Graphite, while also working with the Responsible Minerals Initiative (RMI) to expand the Responsible Mineral Assurance Program (RMAP) certification.

We disclose all relevant information in a transparent manner every year through our website, Sustainability Management Report, and Responsible Minerals Report. In addition, we actively respond to direct requests from various global stakeholders for related information.

※ External inquiries handled on the responsible minerals sourcing of suppliers (2021 - 2025)

(number of cases)

Year	2021	2022	2023	2024	2025
Customer	332	420	538	377	416
NGO/Rating agency, etc	14	7	12	32	12

Through prior consultation with our suppliers, we have secured their consent to publicly disclose their information on the use of conflict minerals and provide that information to Samsung Electronics' stakeholders.

Cooperative Activities with External Parties

To effectively operate responsible minerals sourcing policies and address related issues, we work with companies in the same industry and actively gather insights from relevant stakeholders. We also engage in a variety of initiatives, including social contribution activities and private-public partnership programs, in a bid to seek fundamental solutions for issues related to human rights and environmental degradation.

Responsible Minerals Initiative (RMI)

The RMI is a coalition of global companies dedicated to addressing issues related to the sourcing of minerals from conflict-affected and high-risk areas. As an RMI member, we strive to identify the origins of minerals that move through the global supply chain. To this end, we have developed the CMRT and EMRT – our templates on conflict and responsible minerals – to survey our suppliers and enhance the collection and disclosure of information on smelters in the supply system. Leveraging the RMAP, a validation program for responsible minerals sourcing, we encourage smelters that have been validated as conflict-free to undergo independent third-party certification.



※ RMAP Assessment Introduction

The flagship program of the RMI, the Responsible Minerals Assurance Process (RMAP) takes a unique approach to helping companies make informed choices about responsibly sourced minerals in their supply chains. Focusing on a “pinch point” (a point with relatively few actors) in the global metals supply chain, the RMAP uses an independent third-party assessment of smelter/refiner management systems and sourcing practices to validate conformance with RMAP standards. The assessment employs a risk-based approach to validate smelters’ company-level management processes for responsible mineral procurement.

The RMAP standards are developed to meet the requirements of the OECD Due Diligence Guidance, the Regulation (EU) 2017/821 of the European Parliament and the U.S. Dodd-Frank Wall Street Reform and Consumer Protection Act.

* Source: <http://www.responsiblemineralsinitiative.org/responsible-minerals-assurance-process/>

What risks are covered by the RMAP assessment?

Companies must address all OECD Annex II risks, which are those commonly associated with the extraction, transport and trade of minerals from CAHRAs:

- Any forms of torture, cruel, inhuman and degrading treatment;
- Any forms of forced or compulsory labor;
- The worst forms of child labor;
- Other gross human rights violations and abuses such as widespread sexual violence;
- War crimes or other serious violations of international humanitarian law, crimes against humanity or genocide;
- Direct or indirect support to non-state armed groups;
- Direct or indirect support to public or private security forces;
- Bribery and fraudulent misrepresentation of the origin of minerals;
- Money laundering;
- Non-payment of taxes, fees and royalties to governments.

* Source: <https://www.responsiblemineralsinitiative.org/about/faq/rmap/what-risks-are-covered-by-the-rmap-assessment/>

European Partnership for Responsible Minerals (EPRM)

The EPRM is a multi-stakeholder partnership set up in May of 2016 that serves as a platform for cooperation between EU governments, companies, and civil society to enhance the transparency of supply chains dealing with conflict minerals and responsible minerals. We joined the EPRM in December 2018 as part of our commitment to complying with regulations on conflict and responsible minerals sourcing and fulfilling our social responsibility together with industry partners. With the support of governments and companies around the world, the EPRM advances a variety of initiatives including conducting fact-finding research and suggesting solutions to human rights issues in conflict-affected areas such as the Democratic Republic of the Congo.



International Labour Organization's Child Labour Platform

In 2021, the International Year for the Elimination of Child Labour, Samsung Electronics joined the Child Labour Platform (CLP), a business-led initiative of International Labour Organization (ILO) that brings together like-minded companies, NGOs, Trade Unions and UN Organisations committed to eliminating child labor in their supply chains.

The ILO CLP provides members with opportunities to engage with stakeholders, promote collaborative approaches to due diligence, and share knowledge and best practices.

Within the ILO CLP, Samsung is participating in the Cobalt Working Group, focusing on the Democratic Republic of the Congo (DRC) to strengthen our supply chain due diligence efforts and provide inputs from the private sector perspective.



Key Achievements in Responsible Minerals Sourcing in 2025

Samsung Electronics is listening to advice from various stakeholders with global industries to effectively operate responsible mineral purchase policies and solve problems.

In addition, we are participating in social contribution activities and public-private cooperation programs to find fundamental solutions to human rights and environmental problems.

Category			Status
No. of target suppliers			2,358
Conflict minerals	CMRT survey	No. of smelters	231
		Tantalum	40
		Tin	60
		Tungsten	38
		Gold	93
	No. of on-site audit	219	
Responsible minerals	EMRT survey	No. of smelters	
		Cobalt	66
		Mica	38
		Lithium	46
		Copper	398
	Nickel	114	
	AMRT survey	No. of smelters	
		Natural Graphite	47
		Aluminum	68
		Silver	17
Chromium		17	
Training	No. of trainees	Suppliers	495
		Samsung Electronics	92
			587
External requests (customers)	No. of suppliers	201	
	No. of requests	416	
	No. of models	624	

※ 3TG minerals (Tantalum, Tin, Tungsten, Gold) sourcing countries (149 in total)

Albania, Algeria, Andorra, Angola, Anguilla, Antigua and Barbuda, Argentina, Aruba, Australia, Austria, Azerbaijan, Bahamas, Bangladesh, Barbados, Belarus, Belgium, Benin, Bolivia (Plurinational State of), Bosnia and Herzegovina, Botswana, Brasil, Bulgaria, Burkina Faso, Burundi, Cambodia, Cameroon, Canada, Cayman Islands, Chile, China, Colombia, Congo (Democratic Republic of the), Costa Rica, Côte d'Ivoire, Croatia, Curacao, Cyprus, Czech Republic, Denmark, Dominican Republic, Ecuador, Egypt, El Salvador, Estonia, Eswatini, Ethiopia, Fiji, Finland, France, French Guiana, Georgia, Germany, Ghana, Greece, Grenada, Guatemala, Guinea, Guyana, Honduras, Hong Kong, Hungary, Iceland, India, Indonesia, Ireland, Israel, Italy, Jamaica, Japan, Jordan, Kazakhstan, Kenya, Korea (Republic of), Kuwait, Kyrgyzstan, Lao People's Democratic Republic, Latvia, Lebanon, Liberia, Liechtenstein, Lithuania, Luxembourg, Macao, Madagascar, Malaysia, Malta, Mauritania, Mexico, Moldova (Republic of), Mongolia, Morocco, Mozambique, Myanmar, Namibia, Netherlands, New Caledonia, New Zealand, Nicaragua, Niger, Nigeria, Norway, Oman, Panama, Papua New Guinea, Peru, Philippines, Poland, Portugal, Puerto Rico, Romania, Russia, Rwanda, Saint Kitts and Nevis, Saint Lucia, Saint Vincent and Grenadines, Saudi Arabia, Senegal, Serbia, Sierra Leone, Singapore, Sint Maarten, Slovakia, Solomon Islands, South Africa, Spain, Sri Lanka, Sudan, Suriname, Sweden, Switzerland, Taiwan, Tajikistan, Tanzania, Thailand, Timor-Leste, Togo, Trinidad and Tobago, Tunisia, Turkey, Uganda, United Arab Emirates, United Kingdom, United States of America, Uruguay, Uzbekistan, Venezuela, Viet Nam, Zambia, Zimbabwe

Appendix

1. CMRT 6.5 (21p)
2. EMRT 2.1 (32p)
3. AMRT1.3 (56p)



Conflict Minerals Reporting Template (CMRT)

English

The purpose of this document is to collect sourcing information on tin, tantalum, tungsten and gold used in products

Revision 6.5
April 25, 2025
[Link to Terms & Conditions](#)

Mandatory fields are noted with an asterisk (*). Consult the instructions tab for guidance on how to answer each question.

Company Information

Company Name (*):	Samsung Electronics
Declaration Scope or Class (*):	A. Company
Description of Scope:	
Company Unique ID:	687967554
Company Unique ID Authority:	DUNS
Address:	129 Samseong-ro, Yeongtong-gu, Suwon, Korea #16677
Contact Name (*):	Samsung Electronics Conflict Minerals Manager
Email - Contact (*):	purchasingcm@samsung.com
Phone - Contact (*):	+82-2-2255-0114
Authorizer (*):	Samsung Electronics Conflict Minerals Manager
Title - Authorizer:	
Email - Authorizer (*):	purchasingcm@samsung.com
Phone - Authorizer:	
Effective Date (*):	1-Jan-2026

Answer the following questions 1 - 8 based on the declaration scope indicated above

1) Is any 3TG intentionally added or used in the product(s) or in the production process? (*)

	Answer	Comments
Tantalum (*)	Yes	
Tin (*)	Yes	
Gold (*)	Yes	
Tungsten (*)	Yes	

2) Does any 3TG remain in the product(s)? (*)

	Answer	Comments
Tantalum (*)	Yes	
Tin (*)	Yes	
Gold (*)	Yes	
Tungsten (*)	Yes	

3) Do any of the smelters in your supply chain source the 3TG from the covered countries? (SEC term, see definitions tab) (*)

	Answer	Comments
Tantalum (*)	Yes	
Tin (*)	Yes	
Gold (*)	Yes	
Tungsten (*)	Yes	

4) Do any of the smelters in your supply chain source the 3TG from conflict-affected and high-risk areas? (*)

	Answer	Comments
Tantalum (*)	Yes	
Tin (*)	Yes	
Gold (*)	Yes	
Tungsten (*)	Yes	

5) Does 100 percent of the 3TG (necessary to the functionality or production of your products) originate from recycled or scrap sources? (*)

	Answer	Comments
Tantalum (*)	No	
Tin (*)	No	
Gold (*)	No	
Tungsten (*)	No	

6) What percentage of relevant suppliers have provided a response to your supply chain survey? (*)

	Answer	Comments
Tantalum (*)	100%	
Tin (*)	100%	
Gold (*)	100%	
Tungsten (*)	100%	

7) Have you identified all of the smelters supplying the 3TG to your supply chain? (*)

	Answer	Comments
Tantalum (*)	Yes	
Tin (*)	Yes	
Gold (*)	Yes	
Tungsten (*)	Yes	

Answer the Following Questions at a Company Level

Question	Answer	Comments
A. Have you established a responsible minerals sourcing policy? (*)	Yes	
B. Is your responsible minerals sourcing policy publicly available on your website? (Note – If yes, the user shall specify the URL in the comment field.) (*)	Yes	* 책임광물 관리보고서 : https://www.samsung.com/sec/sustainability/policy-file/YTGmSD6AAAAYw/Responsible_Minerals_Report_kr.pdf
C. Do you require your direct suppliers to source the 3TG from smelters whose due diligence practices have been validated by an independent third party audit program? (*)	Yes	
D. Have you implemented due diligence measures for responsible sourcing? (*)	Yes	
E. Does your company conduct Conflict Minerals survey(s) of your relevant supplier(s)? (*)	Yes, in conformance with IPC1755 (e.g	
F. Do you review due diligence information received from your suppliers against your company's expectations? (*)	Yes	
G. Does your review process include corrective action management? (*)	Yes	
H. Is your company required to file an annual conflict minerals disclosure? (*)	No	

© 2025 Responsible Minerals Initiative. All rights reserved.

CMRT Smelter List: Tantalum, Tin, Tungsten, Gold

No	Metal	ID	Smelter Name	Location	RMAP Status	Direct Sourcing	Indirect Supplying Smelter Sourcing
1	Tantalum (Ta)	CID000211	Changsha South Tantalum Niobium Co., Ltd.	CHINA	Conformant	-	-
2	Tantalum (Ta)	CID000291	Guangdong Rising Rare Metals-EO Materials Ltd.	CHINA	Conformant	LR, HR, DRC.	N/A
3	Tantalum (Ta)	CID000460	F&X Electro-Materials Ltd.	CHINA	Conformant	LR	N/A
4	Tantalum (Ta)	CID000616	XIMEI RESOURCES (GUANGDONG) LIMITED	CHINA	Conformant	LR	N/A
5	Tantalum (Ta)	CID000914	JiuJiang JinXin Nonferrous Metals Co., Ltd.	CHINA	Conformant	N/A	N/A
6	Tantalum (Ta)	CID000917	Jiujiang Tanbre Co., Ltd.	CHINA	Conformant	LR, R/S	N/A
7	Tantalum (Ta)	CID001076	AMG Brasil	BRAZIL	Conformant	LR, HR, CC	N/A
8	Tantalum (Ta)	CID001163	Metallurgical Products India Pvt., Ltd.	INDIA	Conformant	LR, R/S	N/A
9	Tantalum (Ta)	CID001175	Mineracao Taboca S.A.	BRAZIL	Conformant	LR	N/A
10	Tantalum (Ta)	CID001192	Mitsui Mining and Smelting Co., Ltd.	JAPAN	Conformant	R/S	N/A
11	Tantalum (Ta)	CID001200	NPM Silmet AS	ESTONIA	Conformant	R/S, LR	N/A
12	Tantalum (Ta)	CID001277	Ningxia Orient Tantalum Industry Co., Ltd.	CHINA	Conformant	LR, HR, DRC, CC, R/S	N/A
13	Tantalum (Ta)	CID001508	QuantumClean	U.S.A	Conformant		
14	Tantalum (Ta)	CID001522	Yanling Jincheng Tantalum & Niobium Co., Ltd.	CHINA	Conformant	R/S, LR	N/A
15	Tantalum (Ta)	CID001869	Taki Chemical Co., Ltd.	JAPAN	Conformant	R/S	N/A
16	Tantalum (Ta)	CID001891	Telex Metals	U.S.A	Conformant	R/S	N/A
17	Tantalum (Ta)	CID001969	Ulba Metallurgical Plant JSC	KAZAKHSTAN	Conformant	HR, DRC, CC, R/S	N/A
18	Tantalum (Ta)	CID002492	Hengyang King Xing Lifeng New Materials Co., Ltd.	CHINA	Conformant	LR	N/A
19	Tantalum (Ta)	CID002504	D Block Metals, LLC	U.S.A	Conformant	R/S, LR	N/A
20	Tantalum (Ta)	CID002505	FIR Metals & Resource Ltd.	CHINA	Conformant	R/S	N/A
21	Tantalum (Ta)	CID002506	Jiujiang Zhongao Tantalum & Niobium Co., Ltd.	CHINA	Conformant	HR,CC	N/A
22	Tantalum (Ta)	CID002508	XinXing HaoRong Electronic Material Co., Ltd.	CHINA	Conformant	LR	N/A
23	Tantalum (Ta)	CID002512	Jiangxi Dinghai Tantalum & Niobium Co., Ltd.	CHINA	Conformant	LR	N/A
24	Tantalum (Ta)	CID002539	KEMET de Mexico	MEXICO	Conformant	R/S	N/A
25	Tantalum (Ta)	CID002544	TANIOBIS Co., Ltd.	THAILAND	Conformant	LR, HR	N/A
26	Tantalum (Ta)	CID002545	TANIOBIS GmbH	GERMANY	Conformant	LR, HR, R/S	N/A
27	Tantalum (Ta)	CID002548	Materion Newton Inc.	U.S.A	Conformant	LR, R/S	N/A
28	Tantalum (Ta)	CID002549	TANIOBISJAPAN Co., Ltd.	JAPAN	Conformant	R/S	N/A
29	Tantalum (Ta)	CID002550	TANIOBIS Smelting GmbH & Co. KG	GERMANY	Conformant	LR, R/S	N/A
30	Tantalum (Ta)	CID002557	Global Advanced Metals Boyertown	U.S.A	Conformant	LR, R/S	N/A

No	Metal	ID	Smelter Name	Location	RMAP Status	Direct Sourcing	Indirect Supplying Smelter Sourcing
31	Tantalum (Ta)	CID002558	Global Advanced Metals Aizu	JAPAN	Conformant	LR	N/A
32	Tantalum (Ta)	CID002705	Avon Specialty Metals Ltd.	UNITED KINGDOM	Conformant	-	-
33	Tantalum (Ta)	CID002707	Resind Industria e Comercio Ltda.	BRAZIL	Conformant	LR	N/A
34	Tantalum (Ta)	CID002842	Jiangxi Tuohong New Raw Material	CHINA	Conformant	LR	N/A
35	Tantalum (Ta)	CID003159	RFH Recycling Metals Co., Ltd.	CHINA	Conformant	-	-
36	Tantalum (Ta)	CID003191	Jiujiang Janny New Material Co., Ltd.	CHINA	Conformant	-	-
37	Tantalum (Ta)	CID003498	V&D New Materials (Jiangsu) Co., Ltd.	CHINA	Conformant	-	-
38	Tantalum (Ta)	CID003583	RFH Yancheng Jinye New Material Technology Co., Ltd.	CHINA	Conformant	LR	N/A
39	Tantalum (Ta)	CID003973	XIMEI RESOURCES(GUIZHOU) TECHNOLOGY CO., LTD.	CHINA	Conformant	-	-
40	Tantalum (Ta)	CID004054	PowerX Ltd.	RWANDA	Conformant	HR, CC	N/A
41	Tin (Sn)	CID000228	Chenzhou Yunxiang Mining and Metallurgy Co., Ltd.	CHINA	Conformant	R/S	N/A
42	Tin (Sn)	CID000292	Alpha Assembly Solutions Inc	U.S.A	Conformant	LR, R/S	N/A
43	Tin (Sn)	CID000313	PT Premium Tin Indonesia	INDONESIA	Conformant	LR	N/A
44	Tin (Sn)	CID000377	Dongguan Best Alloys Co., Ltd.	CHINA	Conformant	LR	N/A
45	Tin (Sn)	CID000402	Dowa	JAPAN	Conformant	R/S	N/A
46	Tin (Sn)	CID000438	EM Vinto	BOLIVIA	Conformant	LR	N/A
47	Tin (Sn)	CID000448	Estanho de Rondonia S.A.	BRAZIL	Conformant	LR	N/A
48	Tin (Sn)	CID000466	Feinhutte Halsbrucke GmbH	GERMANY	Conformant	-	-
49	Tin (Sn)	CID000468	Fenix Metals	POLAND	Conformant	R/S	N/A
50	Tin (Sn)	CID000538	Gejiu Non-Ferrous Metal Processing Co., Ltd.	CHINA	Conformant	LR	N/A
51	Tin (Sn)	CID001070	China Tin Group Co., Ltd.	CHINA	Conformant	LR, R/S	N/A
52	Tin (Sn)	CID001105	Malaysia Smelting Corporation (MSC)	MALAYSIA	Conformant	-	-
53	Tin (Sn)	CID001142	Metallic Resources, Inc.	U.S.A	Conformant	R/S	N/A
54	Tin (Sn)	CID001173	Mineracao Taboca S.A.	BRAZIL	Conformant	LR	N/A
55	Tin (Sn)	CID001182	Minsur	PERU	Conformant	LR	N/A
56	Tin (Sn)	CID001191	Mitsubishi Materials Corporation	JAPAN	Conformant	R/S	N/A
57	Tin (Sn)	CID001314	O.M. Manufacturing (Thailand) Co., Ltd.	THAILAND	Conformant	R/S	N/A
58	Tin (Sn)	CID001337	Operaciones Metalurgicas S.A.	BOLIVIA	Conformant	LR	N/A
59	Tin (Sn)	CID001453	PT Mitra Stania Prima	INDONESIA	Conformant	LR	N/A
60	Tin (Sn)	CID001458	PT Prima Timah Utama	INDONESIA	Conformant	LR	N/A
61	Tin (Sn)	CID001460	PT Refined Bangka Tin	INDONESIA	Conformant	-	-
62	Tin (Sn)	CID001463	PT Sariwiguna Binasentosa	INDONESIA	Conformant	-	-
63	Tin (Sn)	CID001468	PT Stanindo Inti Perkasa	INDONESIA	Conformant	LR	N/A

No	Metal	ID	Smelter Name	Location	RMAP Status	Direct Sourcing	Indirect Supplying Smelter Sourcing
64	Tin (Sn)	CID001477	PT Timah Tbk Kundur	INDONESIA	Conformant	LR	N/A
65	Tin (Sn)	CID001482	PT Timah Tbk Mentok	INDONESIA	Conformant	LR	N/A
66	Tin (Sn)	CID001490	PT Tinindo Inter NU.S.A	INDONESIA	Conformant	-	-
67	Tin (Sn)	CID001539	Rui Da Hung	TAIWAN	Conformant	LR, R/S	N/A
68	Tin (Sn)	CID001758	Soft Metais Ltda.	BRAZIL	Conformant	-	-
69	Tin (Sn)	CID001898	Thaisarco	THAILAND	Conformant	LR, CC, HR, DRC, R/S	N/A
70	Tin (Sn)	CID002036	White Solder Metalurgia e Mineracao Ltda.	BRAZIL	Conformant	LR	N/A
71	Tin (Sn)	CID002180	Tin Smelting Branch of Yunnan Tin Co., Ltd.	CHINA	Conformant	LR, HR, CC, DRC, R/S	N/A
72	Tin (Sn)	CID002455	CV Venus Inti Perkasa	INDONESIA	Conformant	-	-
73	Tin (Sn)	CID002468	Magnu's Minerai's Metais e Ligas Ltda.	BRAZIL	Conformant	R/S, HR	N/A
74	Tin (Sn)	CID002503	PT ATD Makmur Mandiri Jaya	INDONESIA	Conformant	LR	N/A
75	Tin (Sn)	CID002517	Q.M. Manufacturing Philippines, Inc.	PHILIPPINES	Conformant	R/S	N/A
76	Tin (Sn)	CID002570	CV Ayi Jaya	INDONESIA	Conformant	LR	N/A
77	Tin (Sn)	CID002593	PT Rajehan Ariq	INDONESIA	Conformant	LR	N/A
78	Tin (Sn)	CID002696	PT Cipta Persada Mulia	INDONESIA	Conformant	LR	N/A
79	Tin (Sn)	CID002706	Resind Industria e Comercio Ltda.	BRAZIL	Conformant	LR	N/A
80	Tin (Sn)	CID002756	Super Ligas	BRAZIL	Conformant	HR	N/A
81	Tin (Sn)	CID002773	Aurubis Beerse	BELGIUM	Conformant	R/S	N/A
82	Tin (Sn)	CID002774	Aurubis Berango	SPAIN	Conformant	R/S	N/A
83	Tin (Sn)	CID002776	PT Bangka Prima Tin	INDONESIA	Conformant	LR	N/A
84	Tin (Sn)	CID002844	HuiChang Hill Tin Industry Co., Ltd.	CHINA	Conformant	LR	N/A
85	Tin (Sn)	CID003116	Guangdong Hanhe Non-Ferrous Metal Co., Ltd.	CHINA	Conformant	LR, R/S	N/A
86	Tin (Sn)	CID003190	Chifeng Dajingzi Tin Industry Co., Ltd.	CHINA	Conformant	LR, R/S	N/A
87	Tin (Sn)	CID003325	Tin Technology & Refining	U.S.A	Conformant	R/S	N/A
88	Tin (Sn)	CID003387	Luna Smelter, Ltd.	RWANDA	Conformant	HR, CC, DRC	N/A
89	Tin (Sn)	CID003397	Yunnan Yunfan Non-ferrous Metals Co., Ltd.	CHINA	Conformant	LR	N/A
90	Tin (Sn)	CID003449	PT Mitra Sukses Globalindo	INDONESIA	Conformant	LR	N/A
91	Tin (Sn)	CID003474	TRATHO Metal Quimica	BRAZIL	Conformant	-	-
92	Tin (Sn)	CID003524	CRM Synergies	SPAIN	Conformant	R/S	N/A
93	Tin (Sn)	CID003831	DS Myanmar	MYANMAR	Conformant	-	-
94	Tin (Sn)	CID003868	PT Putera Sarana Shakti (PT PSS)	INDONESIA	Conformant	LR	N/A
95	Tin (Sn)	CID004065	Mining Minerals Resources SARL	DRC	Conformant	DRC	N/A

No	Metal	ID	Smelter Name	Location	RMAP Status	Direct Sourcing	Indirect Supplying Smelter Sourcing
96	Tin (Sn)	CID004403	Takehara PVD Materials Plant / PVD Materials Division of MITSUI MINING & SMELTING CO., LTD.	JAPAN	Conformant	R/S	N/A
97	Tin (Sn)	CID004434	Malaysia Smelting Corporation Berhad (Port Klang)	MALAYSIA	Conformant	LR, CC, HR, DRC	N/A
98	Tin (Sn)	CID004724	Woodcross Smelting Company Limited	UGANDA	Conformant	HR, CC	N/A
99	Tin (Sn)	CID004754	Global Advanced Metals Greenbushes Pty Ltd.	AUSTRALIA	Conformant	LR	N/A
100	Tin (Sn)	CID005067	PT Arsed Indonesia	INDONESIA	Conformant	LR	N/A
101	Tungsten (W)	CID000004	A.L.M.T. Corp.	JAPAN	Conformant	R/S	N/A
102	Tungsten (W)	CID000105	Kennametal Huntsville	U.S.A	Conformant	LR, R/S	N/A
103	Tungsten (W)	CID000218	Guangdong Xianglu Tungsten Co., Ltd.	CHINA	Conformant	LR	N/A
104	Tungsten (W)	CID000258	Chongyi Zhangyuan Tungsten Co., Ltd.	CHINA	Conformant	LR	N/A
105	Tungsten (W)	CID000568	Global Tungsten & Powders LLC	U.S.A	Conformant	LR	N/A
106	Tungsten (W)	CID000766	Hunan Chenzhou Mining Co., Ltd.	CHINA	Conformant	-	-
107	Tungsten (W)	CID000825	Japan New Metals Co., Ltd.	JAPAN	Conformant	R/S	N/A
108	Tungsten (W)	CID000966	Kennametal Fallon	U.S.A	Conformant	LR	N/A
109	Tungsten (W)	CID002044	Wolfram Bergbau und Hutten AG	AUSTRIA	Conformant	#N/A	N/A
110	Tungsten (W)	CID002082	Xiamen Tungsten Co., Ltd.	CHINA	Conformant	#N/A	N/A
111	Tungsten (W)	CID002315	Ganzhou Jiangwu Ferrotungsten Co., Ltd.	CHINA	Conformant	LR, R/S	N/A
112	Tungsten (W)	CID002316	Jiangxi Yaosheng Tungsten Co., Ltd.	CHINA	Conformant	LR	N/A
113	Tungsten (W)	CID002317	Jiangxi Xinsheng Tungsten Industry Co., Ltd.	CHINA	Conformant	See aggregated data below for TI-CMC Sourcing	N/A
114	Tungsten (W)	CID002318	Jiangxi Tonggu Non-ferrous Metallurgical & Chemical Co., Ltd.	CHINA	Conformant	-	-
115	Tungsten (W)	CID002319	Malipo Haiyu Tungsten Co., Ltd.	CHINA	Conformant	See aggregated data below for TI-CMC Sourcing	N/A
116	Tungsten (W)	CID002320	Xiamen Tungsten (H.C.) Co., Ltd.	CHINA	Conformant	#N/A	N/A
117	Tungsten (W)	CID002321	Jiangxi Gan Bei Tungsten Co., Ltd.	CHINA	Conformant	See aggregated data below for TI-CMC Sourcing	N/A
118	Tungsten (W)	CID002494	Ganzhou Seadragon W & Mo Co., Ltd.	CHINA	Conformant	LR	N/A
119	Tungsten (W)	CID002502	Asia Tungsten Products Vietnam Ltd.	VIET NAM	Conformant	HR,CC, R/S, LR	N/A
120	Tungsten (W)	CID002541	H.C. Starck Tungsten GmbH	GERMANY	Conformant	R/S	N/A
121	Tungsten (W)	CID002542	TANIOBIS Smelting GmbH & Co. KG	GERMANY	Conformant	LR, R/S	N/A
122	Tungsten (W)	CID002543	Masan High-Tech Materials	VIET NAM	Conformant	LR, HR, DRC, CC, R/S	N/A

No	Metal	ID	Smelter Name	Location	RMAP Status	Direct Sourcing	Indirect Supplying Smelter Sourcing
123	Tungsten (W)	CID002551	Jiangwu H.C. Starck Tungsten Products Co., Ltd.	CHINA	Conformant	See aggregated data below for TI-CMC Sourcing	N/A
124	Tungsten (W)	CID002589	Niagara Refining LLC	U.S.A	Conformant	LR	N/A
125	Tungsten (W)	CID002641	China Molybdenum Tungsten Co., Ltd.	CHINA	Conformant	LR	N/A
126	Tungsten (W)	CID002704	Avon Specialty Metals Ltd.	UNITED KINGDOM	Conformant	-	-
127	Tungsten (W)	CID002827	Philippine Chuangxin Industrial Co., Inc.	PHILIPPINES	Conformant	See aggregated data below for TI-CMC Sourcing	N/A
128	Tungsten (W)	CID003407	Lianyou Metals Co., Ltd.	TAIWAN	Conformant	R/S	N/A
129	Tungsten (W)	CID003417	Hubei Green Tungsten Co., Ltd.	CHINA	Conformant	R/S	N/A
130	Tungsten (W)	CID003468	Cronimet Brasil Ltda	BRAZIL	Conformant	LR	N/A
131	Tungsten (W)	CID003580	Ganzhou Sunny Non-Ferrous Metals Co., Ltd.	CHINA	Conformant	-	-
132	Tungsten (W)	CID003609	Fujian Xinlu Tungsten Co., Ltd.	CHINA	Conformant	-	-
133	Tungsten (W)	CID003993	Tungsten Vietnam Joint Stock Company	VIET NAM	Conformant	#N/A	N/A
134	Tungsten (W)	CID004397	Lianyou Resources Co., Ltd.	TAIWAN	Conformant	R/S	N/A
135	Tungsten (W)	CID004430	Shinwon Tungsten (Fujian Shanghang) Co., Ltd.	CHINA	Conformant	LR, R/S	N/A
136	Tungsten (W)	CID004619	Kenee Mining Corporation Vietnam	VIET NAM	Conformant	R/S	N/A
137	Tungsten (W)	CID004797	Philippine Bonway Manufacturing Industrial Corporation	PHILIPPINES	Conformant	R/S	N/A
138	Tungsten (W)	CID005012	Jing Yuan Tungsten Technology Co., Ltd.	TAIWAN	Conformant	R/S	N/A
139	Gold (Au)	CID000015	Advanced Chemical Company	U.S.A	Conformant	R/S, LR	N/A
140	Gold (Au)	CID000019	Aida Chemical Industries Co., Ltd.	JAPAN	Conformant	R/S, LR	N/A
141	Gold (Au)	CID000035	Agosi AG	GERMANY	Conformant	See aggregated data below for LBMA Good Delivery Sourcing and RJC Sourcing	N/A
142	Gold (Au)	CID000041	Almalyk Mining and Metallurgical Complex (AMMC)	UZBEKISTAN	Conformant	See aggregated data below for LBMA Good Delivery Sourcing	N/A
143	Gold (Au)	CID000058	AngloGold Ashanti Corrego do Sitio Mineracao	BRAZIL	Conformant	See aggregated data below for LBMA Good Delivery Sourcing	N/A
144	Gold (Au)	CID000077	Argor-Heraeus S.A.	SWITZERLAND	Conformant	See aggregated data below for LBMA Good Delivery Sourcing and RJC Sourcing	N/A
145	Gold (Au)	CID000082	ASAHI METALFINE, Inc.	JAPAN	Conformant	See aggregated data below for LBMA Good Delivery Sourcing	N/A
146	Gold (Au)	CID000090	Asaka Riken Co., Ltd.	JAPAN	Conformant	R/S	N/A
147	Gold (Au)	CID000113	Aurubis AG	GERMANY	Conformant	See aggregated data below for LBMA Good Delivery Sourcing	N/A

No	Metal	ID	Smelter Name	Location	RMAP Status	Direct Sourcing	Indirect Supplying Smelter Sourcing
148	Gold (Au)	CID000128	Bangko Sentral ng Pilipinas (Central Bank of the Philippines)	PHILIPPINES	Conformant	See aggregated data below for LBMA Good Delivery Sourcing	N/A
149	Gold (Au)	CID000157	Boliden Ronnskar	SWEDEN	Conformant	See aggregated data below for LBMA Good Delivery Sourcing	N/A
150	Gold (Au)	CID000176	C. Hafner GmbH + Co. KG	GERMANY	Conformant	See aggregated data below for LBMA Good Delivery Sourcing and RJC Sourcing	N/A
151	Gold (Au)	CID000185	CCR Refinery - Glencore Canada Corporation	CANADA	Conformant	See aggregated data below for LBMA Good Delivery Sourcing	N/A
152	Gold (Au)	CID000233	Chimet S.p.A.	ITALY	Conformant	See aggregated data below for LBMA Good Delivery Sourcing	N/A
153	Gold (Au)	CID000264	Chugai Mining	JAPAN	Conformant	R/S, See aggregated data below for LBMA Good Delivery Sourcing and RJC Sourcing	N/A
154	Gold (Au)	CID000359	DSC (Do Sung Corporation)	KOREA, REPUBLIC OF	Conformant	R/S	N/A
155	Gold (Au)	CID000401	Dowa	JAPAN	Conformant	LR, HR, R/S	N/A
156	Gold (Au)	CID000425	Eco-System Recycling Co., Ltd. East Plant	JAPAN	Conformant	R/S	N/A
157	Gold (Au)	CID000689	LT Metal Ltd.	KOREA, REPUBLIC OF	Conformant	R/S	N/A
158	Gold (Au)	CID000694	Heimerle + Meule GmbH	GERMANY	Conformant	See aggregated data below for LBMA Good Delivery Sourcing	N/A
159	Gold (Au)	CID000707	Heraeus Metals Hong Kong Ltd.	HONG KONG	Conformant	See aggregated data below for LBMA Good Delivery Sourcing and RJC Sourcing	N/A
160	Gold (Au)	CID000711	Heraeus Germany GmbH Co. KG	GERMANY	Conformant	LR, R/S	N/A
161	Gold (Au)	CID000801	Inner Mongolia Qiankun Gold and Silver Refinery Share Co., Ltd.	CHINA	Conformant	See aggregated data below for LBMA Good Delivery Sourcing	N/A
162	Gold (Au)	CID000807	Ishifuku Metal Industry Co., Ltd.	JAPAN	Conformant	See aggregated data below for LBMA Good Delivery Sourcing	N/A
163	Gold (Au)	CID000814	Istanbul Gold Refinery	TURKEY	Conformant	See aggregated data below for LBMA Good Delivery Sourcing and RJC Sourcing	N/A
164	Gold (Au)	CID000823	Japan Mint	JAPAN	Conformant	See aggregated data below for LBMA Good Delivery Sourcing	N/A
165	Gold (Au)	CID000855	Jiangxi Copper Co., Ltd.	CHINA	Conformant	See aggregated data below for LBMA Good Delivery Sourcing	N/A
166	Gold (Au)	CID000920	Asahi Refining U.S.A Inc.	U.S.A	Conformant	See aggregated data below for LBMA Good Delivery Sourcing	N/A
167	Gold (Au)	CID000924	Asahi Refining Canada Ltd.	CANADA	Conformant	See aggregated data below for LBMA Good Delivery Sourcing	N/A

No	Metal	ID	Smelter Name	Location	RMAP Status	Direct Sourcing	Indirect Supplying Smelter Sourcing
168	Gold (Au)	CID000937	JX Nippon Mining & Metals Co., Ltd.	JAPAN	Conformant	See aggregated data below for LBMA Good Delivery Sourcing	N/A
169	Gold (Au)	CID000957	Kazzinc	KAZAKHSTAN	Conformant	See aggregated data below for LBMA Good Delivery Sourcing	N/A
170	Gold (Au)	CID000969	Kennecott Utah Copper LLC	U.S.A	Conformant	LR	N/A
171	Gold (Au)	CID000981	Kojima Chemicals Co., Ltd.	JAPAN	Conformant	R/S	N/A
172	Gold (Au)	CID001078	LS MnM Inc.	KOREA, REPUBLIC OF	Conformant	See aggregated data below for LBMA Good Delivery Sourcing	N/A
173	Gold (Au)	CID001113	Materion	U.S.A	Conformant	R/S, HR	N/A
174	Gold (Au)	CID001119	Matsuda Sangyo Co., Ltd.	JAPAN	Conformant	See aggregated data below for LBMA Good Delivery Sourcing	N/A
175	Gold (Au)	CID001147	Metalor Technologies (Suzhou) Ltd.	CHINA	Conformant	See aggregated data below for LBMA Good Delivery Sourcing and RJC Sourcing	N/A
176	Gold (Au)	CID001149	Metalor Technologies (Hong Kong) Ltd.	CHINA	Conformant	See aggregated data below for LBMA Good Delivery Sourcing and RJC Sourcing	N/A
177	Gold (Au)	CID001152	Metalor Technologies (Singapore) Pte., Ltd.	SINGAPORE	Conformant	See aggregated data below for LBMA Good Delivery Sourcing and RJC Sourcing	N/A
178	Gold (Au)	CID001153	Metalor Technologies S.A.	SWITZERLAND	Conformant	See aggregated data below for LBMA Good Delivery Sourcing and RJC Sourcing	N/A
179	Gold (Au)	CID001157	Metalor U.S.A Refining Corporation	U.S.A	Conformant	See aggregated data below for LBMA Good Delivery Sourcing and RJC Sourcing	N/A
180	Gold (Au)	CID001161	Metalurgica Met-Mex Penoles S.A. De C.V.	MEXICO	Conformant	See aggregated data below for LBMA Good Delivery Sourcing	N/A
181	Gold (Au)	CID001188	Mitsubishi Materials Corporation	JAPAN	Conformant	See aggregated data below for LBMA Good Delivery Sourcing	N/A
182	Gold (Au)	CID001193	Mitsui Mining and Smelting Co., Ltd.	JAPAN	Conformant	LR, R/S	N/A
183	Gold (Au)	CID001220	Nadir Metal Rafineri San. Ve Tic. A.S.	TURKEY	Conformant	See aggregated data below for LBMA Good Delivery Sourcing	N/A
184	Gold (Au)	CID001236	Navoi Mining and Metallurgical Combinat	UZBEKISTAN	Conformant	See aggregated data below for LBMA Good Delivery Sourcing	N/A
185	Gold (Au)	CID001259	Nihon Material Co., Ltd.	JAPAN	Conformant	See aggregated data below for LBMA Good Delivery Sourcing	N/A
186	Gold (Au)	CID001325	Ohura Precious Metal Industry Co., Ltd.	JAPAN	Conformant	R/S, LR	N/A
187	Gold (Au)	CID001352	MKS PAMP SA	SWITZERLAND	Conformant	See aggregated data below for LBMA Good Delivery Sourcing	N/A

No	Metal	ID	Smelter Name	Location	RMAP Status	Direct Sourcing	Indirect Supplying Smelter Sourcing
188	Gold (Au)	CID001397	PT Aneka Tambang (Persero) Tbk	INDONESIA	Conformant	See aggregated data below for LBMA Good Delivery Sourcing	N/A
189	Gold (Au)	CID001498	PX Precinox S.A.	SWITZERLAND	Conformant	See aggregated data below for LBMA Good Delivery Sourcing	N/A
190	Gold (Au)	CID001512	Rand Refinery (Pty) Ltd.	SOUTH AFRICA	Conformant	See aggregated data below for LBMA Good Delivery Sourcing	N/A
191	Gold (Au)	CID001534	Royal Canadian Mint	CANADA	Conformant	See aggregated data below for LBMA Good Delivery Sourcing	N/A
192	Gold (Au)	CID001585	SEMPSA Joyeria Plateria S.A.	SPAIN	Conformant	See aggregated data below for LBMA Good Delivery Sourcing and RJC Sourcing	N/A
193	Gold (Au)	CID001622	Shandong Zhaojin Gold & Silver Refinery Co., Ltd.	CHINA	Conformant	See aggregated data below for LBMA Good Delivery Sourcing	N/A
194	Gold (Au)	CID001736	Sichuan Tianze Precious Metals Co., Ltd.	CHINA	Conformant	See aggregated data below for LBMA Good Delivery Sourcing	N/A
195	Gold (Au)	CID001761	Solar Applied Materials Technology Corp.	TAIWAN	Conformant	See aggregated data below for LBMA Good Delivery Sourcing	N/A
196	Gold (Au)	CID001798	Sumitomo Metal Mining Co., Ltd.	JAPAN	Conformant	See aggregated data below for LBMA Good Delivery Sourcing	N/A
197	Gold (Au)	CID001875	Tanaka Kikinzoku Kogyo K.K.	JAPAN	Conformant	See aggregated data below for LBMA Good Delivery Sourcing	N/A
198	Gold (Au)	CID001916	Shandong Gold Smelting Co., Ltd.	CHINA	Conformant	See aggregated data below for LBMA Good Delivery Sourcing	N/A
199	Gold (Au)	CID001938	Tokuriki Honten Co., Ltd.	JAPAN	Conformant	See aggregated data below for LBMA Good Delivery Sourcing	N/A
200	Gold (Au)	CID001980	Umicore S.A. Business Unit Precious Metals Refining	BELGIUM	Conformant	See aggregated data below for LBMA Good Delivery Sourcing	N/A
201	Gold (Au)	CID001993	United Precious Metal Refining, Inc.	U.S.A	Conformant	R/S, HR	N/A
202	Gold (Au)	CID002003	Valcambi S.A.	SWITZERLAND	Conformant	See aggregated data below for LBMA Good Delivery Sourcing and RJC Sourcing	N/A
203	Gold (Au)	CID002030	Western Australian Mint (T/a The Perth Mint)	AUSTRALIA	Conformant	See aggregated data below for LBMA Good Delivery Sourcing	N/A
204	Gold (Au)	CID002100	Yamakin Co., Ltd.	JAPAN	Conformant	R/S	N/A
205	Gold (Au)	CID002129	Yokohama Metal Co., Ltd.	JAPAN	Conformant	R/S	N/A
206	Gold (Au)	CID002224	Zhongyuan Gold Smelter of Zhongjin Gold Corporation	CHINA	Conformant	See aggregated data below for LBMA Good Delivery Sourcing	N/A
207	Gold (Au)	CID002243	Gold Refinery of Zijin Mining Group Co., Ltd.	CHINA	Conformant	See aggregated data below for LBMA Good Delivery Sourcing	N/A
208	Gold (Au)	CID002290	SAFINA A.S.	CZECHIA	Conformant	R/S, LR	N/A

No	Metal	ID	Smelter Name	Location	RMAP Status	Direct Sourcing	Indirect Supplying Smelter Sourcing
209	Gold (Au)	CID002509	MMTC-PAMP India Pvt., Ltd.	INDIA	Conformant	See aggregated data below for LBMA Good Delivery Sourcing	N/A
210	Gold (Au)	CID002511	KGHM Polska Miedz Spolka Akcyjna	POLAND	Conformant	See aggregated data below for LBMA Good Delivery Sourcing	N/A
211	Gold (Au)	CID002580	T.C.A S.p.A	ITALY	Conformant	See aggregated data below for LBMA Good Delivery Sourcing	N/A
212	Gold (Au)	CID002582	REMONDIS PMR B.V.	NETHERLANDS	Conformant	R/S, LR	N/A
213	Gold (Au)	CID002605	Korea Zinc Co., Ltd.	KOREA, REPUBLIC OF	Conformant	LR, R/S	N/A
214	Gold (Au)	CID002615	TOO Tau-Ken-Altyn	KAZAKHSTAN	Conformant	See aggregated data below for LBMA Good Delivery Sourcing	N/A
215	Gold (Au)	CID002708	Abington Reldan Metals, LLC	U.S.A	Conformant	HR, R/S, LR	N/A
216	Gold (Au)	CID002765	Italpreziosi	ITALY	Conformant	See aggregated data below for LBMA Good Delivery Sourcing and RJC Sourcing	N/A
217	Gold (Au)	CID002778	WIELAND Edelmetalle GmbH	GERMANY	Conformant	R/S, LR	N/A
218	Gold (Au)	CID002863	Bangalore Refinery	INDIA	Conformant	LR, R/S, HR	N/A
219	Gold (Au)	CID002918	SungEel HiMetal Co., Ltd.	KOREA, REPUBLIC OF	Conformant	R/S	N/A
220	Gold (Au)	CID002919	Planta Recuperadora de Metales SpA	CHILE	Conformant	LR	N/A
221	Gold (Au)	CID003189	NH Recytech Company	KOREA, REPUBLIC OF	Conformant	LR, R/S	N/A
222	Gold (Au)	CID003424	Eco-System Recycling Co., Ltd. North Plant	JAPAN	Conformant	R/S	N/A
223	Gold (Au)	CID003425	Eco-System Recycling Co., Ltd. West Plant	JAPAN	Conformant	R/S	N/A
224	Gold (Au)	CID003575	Metal Concentrators SA (Pty) Ltd.	SOUTH AFRICA	Conformant	See aggregated data below for RJC Sourcing	N/A
225	Gold (Au)	CID003641	Gold by Gold Colombia	COLOMBIA	Conformant	HR, R/S	N/A
226	Gold (Au)	CID004010	Coimpa Industrial LTDA	BRAZIL	Conformant	HR	N/A
227	Gold (Au)	CID004506	GG Refinery Ltd.	TANZANIA	Conformant	HR, CC	N/A
228	Gold (Au)	CID004604	Impala Platinum - Base Metal Refinery (BMR)	SOUTH AFRICA	Conformant	-	-
229	Gold (Au)	CID004610	Impala Platinum - Rustenburg Smelter	SOUTH AFRICA	Conformant	-	-
230	Gold (Au)	CID004714	Impala Platinum - Platinum Metals Refinery (PMR)	SOUTH AFRICA	Conformant	N/A	N/A
231	Gold (Au)	CID004755	Elite Industech Co., Ltd.	TAIWAN	Conformant	R/S	N/A



Select Language Preference Here:
 请选择你的语言:
 表示言語をここから選択してください:
 사용할 언어를 선택하십시오:
Sélectionner la langue préférée ici:
Wählen sie hier die Sprache:

Extended Minerals Reporting Template (EMRT)

English

Revision 2.1
October 17, 2025
[Link to Terms & Conditions](#)

The purpose of this document is to collect sourcing information on below minerals.

Mandatory fields are noted with an asterisk (*). Consult the instructions tab for guidance on how to answer each question.

Company Information													
Company Name (*):	Samsung Electronics												
Declaration Scope or Class (*):	A. Company												
Description of Scope:													
Select Minerals/Metals in Scope (*):	<table border="1"> <tr> <td>Cobalt</td> <td>Copper</td> <td>Graphite</td> <td></td> <td></td> <td></td> </tr> <tr> <td>Lithium</td> <td>Mica</td> <td>Nickel</td> <td></td> <td></td> <td></td> </tr> </table>	Cobalt	Copper	Graphite				Lithium	Mica	Nickel			
Cobalt	Copper	Graphite											
Lithium	Mica	Nickel											
Note: The minerals selected here are reflected in questions 1-7 and C, and will be sorted in alphabetical order. Please ensure that the answers match the intended minerals.													
Company Unique ID:	687967554												
Company Unique ID Authority:	DUNS												
Address:	129 Samseong-ro, Yeongtong-gu, Suwon, Korea #16677												
Contact Name (*):	Samsung Electronics Conflict Minerals Manager												
Email - Contact (*):	purchasingcm@samsung.com												
Phone - Contact (*):	+82-2-2255-0114												
Authorizer (*):	Samsung Electronics Conflict Minerals Manager												
Title - Authorizer:													
Email - Authorizer (*):	purchasingcm@samsung.com												
Phone - Authorizer:													
Effective Date (*):	1-Jan-2026												

Answer the following questions 1 - 7 based on the declaration scope indicated above

Question	Mineral	Answer	Comments
1) Is any of the specified mineral/metal intentionally added or used in the product(s) or in the production process? (*)	Cobalt(*)	Yes	
	Copper(*)	Yes	
	Graphite(*)	Yes	
	Lithium(*)	Yes	
	Mica(*)	Yes	
	Nickel(*)	Yes	
2) Does any of the specified mineral/metal remain in the product(s)? (*)	Cobalt(*)	Yes	
	Copper(*)	Yes	
	Graphite(*)	Yes	
	Lithium(*)	Yes	
	Mica(*)	Yes	
	Nickel(*)	Yes	
3) Do any of the smelters or processors in your supply chain source the specified mineral/metal from conflict-affected and high-risk areas? (OECD Due Diligence Guidance, see definitions tab) (*)	Cobalt(*)	Yes	
	Copper(*)	Unknown	
	Graphite(*)	Unknown	
	Lithium(*)	Unknown	
	Mica(*)	Unknown	
	Nickel(*)	Unknown	
4) Does 100 percent of the specified mineral/metal originate from recycled or scrap sources? (*)	Cobalt(*)	No	
	Copper(*)	Unknown	
	Graphite(*)	Unknown	
	Lithium(*)	Unknown	
	Mica(*)	Unknown	
	Nickel(*)	Unknown	
5) What percentage of relevant suppliers have provided a response to your supply chain survey? (*)	Cobalt(*)	Greater than 90%	
	Copper(*)	Greater than 90%	
	Graphite(*)	Greater than 90%	
	Lithium(*)	Greater than 90%	
	Mica(*)	Greater than 90%	
	Nickel(*)	Greater than 90%	

6) Have you identified all of the smelters or processors supplying the specified minerals/metal to your supply chain? (*)

	Answer	Comments
Cobalt(*)	Yes	
Copper(*)	Yes	
Graphite(*)	Yes	
Lithium(*)	Yes	
Mica(*)	Yes	
Nickel(*)	Yes	

7) Has all applicable smelter or processor information received by your company been reported in this declaration? (*)

	Answer	Comments
Cobalt(*)	Yes	
Copper(*)	Yes	
Graphite(*)	Yes	
Lithium(*)	Yes	
Mica(*)	Yes	
Nickel(*)	Yes	

Answer the Following Questions at a Company Level

Question	Answer	Comments
A. Have you established a responsible minerals sourcing policy? (*)	Yes	
B. Is your responsible minerals sourcing policy publicly available on your website? (Note – If yes, the user shall specify the URL in the comment field.) (*)	Yes	* https://www.samsung.com/global/sustainability/policy-file/AYVhOrasB1cAtx95/responsible_Minerals_Report_en.pdf
C. Do you require your direct suppliers to source the specified minerals/metals from smelters whose due diligence practices have been validated by an independent third-party audit program? (*)		
	Cobalt(*) Yes	
	Copper(*) No	
	Graphite(*) No	
	Lithium(*) No	
	Mica(*) No	
	Nickel(*) No	
D. Have you implemented due diligence measures for responsible sourcing? (*)	Yes	
E. Does your company conduct supply chain survey(s) of your relevant supplier(s) on the specified minerals/metals? (*)	Yes, in conformance with IPC1755 (e.g. EMRT)	
F. Do you review due diligence information received from your suppliers against your company's expectations? (*)	Yes	
G. Does your review process include corrective action management? (*)	Yes	

© 2025 Responsible Minerals Initiative. All rights reserved.

EMRT Smelter List : Cobalt, Copper, Graphite, Lithium, Mica, Nickel

No	Metal	ID	Smelter Name	Location	RMAP Status	Direct Sourcing	Indirect Supplying Smelter Sourcing
1	Cobalt (Co)	CID003209	Gem (Jiangsu) Cobalt Industry Co., Ltd.	CHINA	Conformant	DRC, HR	***
2	Cobalt (Co)	CID003210	Lanzhou Jinchuan Advanced Materials Technology Co., Ltd.	CHINA	Conformant	DRC, HR, LR, R/S	***
3	Cobalt (Co)	CID003211	Zhuhai Kelixin Metal Materials Co., Ltd.	CHINA	Conformant	-	-
4	Cobalt (Co)	CID003212	Ganzhou Tengyuan Cobalt New Material Co., Ltd.	CHINA	Conformant	R/S	***DRC
5	Cobalt (Co)	CID003213	Guangxi Yinyi Advanced Material Co., Ltd.	CHINA	Conformant	LR, HR, DRC	***
6	Cobalt (Co)	CID003219	Hunan Brunp Recycling Technology Co., Ltd.	CHINA	Conformant	DRC, HR, R/S	***
7	Cobalt (Co)	CID003225	Zhejiang Huayou Cobalt & Nickel Co., Ltd.	CHINA	Conformant	DRC, HR,	***
8	Cobalt (Co)	CID003226	Umicore Finland Oy	FINLAND	Conformant	DRC, HR, R/S	DRC, HR, R/S
9	Cobalt (Co)	CID003227	GanZhou Yihao Umicore Industries Co., Ltd	CHINA	Conformant	DRC, HR	***
10	Cobalt (Co)	CID003228	Umicore Olen	BELGIUM	Conformant	LR, R/S	DRC, HR, LR
11	Cobalt (Co)	CID003232	Dynatec Madagascar Company	MADAGASCAR	Conformant	LR	N/A
12	Cobalt (Co)	CID003239	Port Colborne Refinery	CANADA	Conformant	LR, R/S	N/A
13	Cobalt (Co)	CID003255	Quzhou Huayou Cobalt New Material Co., Ltd.	CHINA	Conformant	DRC, HR, LR	***
14	Cobalt (Co)	CID003261	Kamoto Copper Company	DRC	Conformant	DRC, HR	N/A
15	Cobalt (Co)	CID003264	Chemaf Etoile	DRC	Conformant	DRC, HR	N/A
16	Cobalt (Co)	CID003266	Societe pour le Traitment du Terril de Lubumbashi (STL)	DRC	Conformant	DRC, HR	N/A
17	Cobalt (Co)	CID003275	Kolwezi Tailings (KMT, aka Kingamyambo Musonoi Tailings)	DRC	Conformant	DRC, HR	N/A
18	Cobalt (Co)	CID003278	Niihama Nickel and Cobalt Facility	JAPAN	Conformant	LR	LR
19	Cobalt (Co)	CID003279	Mine de Bou-Azzer	MOROCCO	Conformant	-	-
20	Cobalt (Co)	CID003280	Compagnie de Tifnout Tiranimine	MOROCCO	Conformant	LR	N/A
21	Cobalt (Co)	CID003291	Guangdong Jiana Energy Technology Co., Ltd.	CHINA	Conformant	DRC, HR	***
22	Cobalt (Co)	CID003293	Jiangsu Xiongfeng Technology Co., Ltd.	CHINA	Conformant	DRC, HR, R/S	***
23	Cobalt (Co)	CID003301	Mutanda	DRC	Conformant	DRC, HR	N/A
24	Cobalt (Co)	CID003338	SungEel HiMetal Co., Ltd.	KOREA, REPUBLIC OF	Conformant	R/S, HR, DRC	DRC, HR
25	Cobalt (Co)	CID003377	Jiangxi Jiangwu Cobalt Industrial Co., Ltd.	CHINA	Conformant	DRC, HR	***
26	Cobalt (Co)	CID003378	Jingmen GEM Co., Ltd.	CHINA	Conformant	DRC, HR, R/S	***
27	Cobalt (Co)	CID003384	Ganzhou Highpower Technology Co., Ltd.	CHINA	Conformant	R/S	N/A
28	Cobalt (Co)	CID003390	NORILSK NICKEL HARJAVALTA OY	FINLAND	Conformant	HR, R/S	N/A

No	Metal	ID	Smelter Name	Location	RMAP Status	Direct Sourcing	Indirect Supplying Smelter Sourcing
29	Cobalt (Co)	CID003398	New Era Group Zhejiang Zhongneng Cycle Technology Co., Ltd.	CHINA	Conformant	DRC, HR, R/S	DRC, HR, LR
30	Cobalt (Co)	CID003404	Hunan Yacheng New Energy Co., Ltd.	CHINA	Conformant	N/A	***
31	Cobalt (Co)	CID003406	Minara Resources Pty	AUSTRALIA	Conformant	LR, R/S	N/A
32	Cobalt (Co)	CID003411	Hunan CNGR New Energy Science & Technology Co., Ltd.	CHINA	Conformant	DRC, HR, LR, R/S	***
33	Cobalt (Co)	CID003429	Tenke Fungurume Mining (TFM)	DRC	Conformant	DRC, HR	N/A
34	Cobalt (Co)	CID003472	Jervois Finland OY	FINLAND	Conformant	-	-
35	Cobalt (Co)	CID003473	CoreMax Corporation	TAIWAN	Conformant	N/A	DRC, HR, R/S
36	Cobalt (Co)	CID003491	ICoNiChem	UNITED KINGDOM	Conformant	R/S	LR, HR, DRC, R/S
37	Cobalt (Co)	CID003526	Zhejiang Greatpower Cobalt Materials Co., Ltd.	CHINA	Conformant	DRC, HR, R/S	***
38	Cobalt (Co)	CID003534	Mechema Taiwan Plant 2	TAIWAN	Conformant	N/A	LR, R/S
39	Cobalt (Co)	CID003577	Harima Refinery	JAPAN	Conformant	LR	N/A
40	Cobalt (Co)	CID003584	Vale - Long Harbour Processing Plant (LHPP)	CANADA	Conformant	LR	N/A
41	Cobalt (Co)	CID003585	BASF Shanshan Battery Materials Co., Ltd.	CHINA	Conformant	-	-
42	Cobalt (Co)	CID003587	Kisanfu	DRC	Conformant	DRC, HR	N/A
43	Cobalt (Co)	CID003610	Guizhou CNGR Resource Recycling Industry Development Co., Ltd.	CHINA	Conformant	DRC, HR, R/S	***
44	Cobalt (Co)	CID003676	Jiangxi Rui da Xinnengyuan Technology Co., Ltd.	CHINA	Conformant	R/S	N/A
45	Cobalt (Co)	CID003702	Zhejiang Power New Energy Materials Co., Ltd.	CHINA	Conformant	-	-
46	Cobalt (Co)	CID003927	Anhui Hanrui New Material Co., Ltd.	CHINA	Conformant	DRC, HR	***
47	Cobalt (Co)	CID003974	Fujian Evergreen New Energy Technology Co.	CHINA	Conformant	DRC, HR, R/S	***
48	Cobalt (Co)	CID004003	Jiangxi Miracle Golden Tiger Cobalt Co. Ltd.	CHINA	Conformant	R/S	N/A
49	Cobalt (Co)	CID004057	Eti Bakir A.S	TURKEY	Conformant	LR	N/A
50	Cobalt (Co)	CID004391	Guizhou Red Star Electronic Material Co., Ltd.	CHINA	Conformant	-	-
51	Cobalt (Co)	CID004393	Lianyou Resources Co., Ltd.	TAIWAN	Conformant	R/S	DRC, HR
52	Cobalt (Co)	CID004524	PT HUAYUE NICKEL COBALT	INDONESIA	Conformant	LR	N/A
53	Cobalt (Co)	CID004608	Impala Platinum - Base Metal Refinery (BMR)	SOUTH AFRICA	Conformant	N/A	HR
54	Cobalt (Co)	CID004614	Impala Platinum - Rustenburg Smelter	SOUTH AFRICA	Conformant	HR	N/A
55	Cobalt (Co)	CID004620	Sichuan Jayson New Energy Technology Co., Ltd.	CHINA	Conformant	DRC, HR	N/A
56	Cobalt (Co)	CID004681	Guangxi CNGR New Energy Science & Technology Co., Ltd.	CHINA	Conformant	DRC, HR, LR	***
57	Cobalt (Co)	CID004707	Jiangmen Chancsun Umicore Industry Co.,Ltd	CHINA	Conformant	HR, LR, R/S	***

No	Metal	ID	Smelter Name	Location	RMAP Status	Direct Sourcing	Indirect Supplying Smelter Sourcing
58	Cobalt (Co)	CID004731	PT QMB New Energy Materials	INDONESIA	Conformant	LR	N/A
59	Cobalt (Co)	CID004745	SOCIETE MINIERE DU KATANGA (Lupoto Plant)	DRC	Conformant	-	-
60	Cobalt (Co)	CID004756	TELF AG	SWITZERLAND	Conformant	-	-
61	Cobalt (Co)	CID004802	PT Halmahera Persada Lygend	INDONESIA	Conformant	LR	N/A
62	Cobalt (Co)	CID004811	CMOC Kisanfu Mining SARL	DRC	Conformant	DRC, HR	N/A
63	Cobalt (Co)	CID005013	Jing Yuan Tungsten Technology Co., Ltd.	TAIWAN	Conformant	-	-
64	Cobalt (Co)	CID005213	PT HUAFEI NICKEL COBALT	INDONESIA	Conformant	LR	N/A
65	Cobalt (Co)	CID005253	PT Obi Nickel Cobalt	INDONESIA	Conformant	LR	N/A
66	Cobalt (Co)	CID005276	Yichang Brunp Contemporary Amperex Co., Ltd.	CHINA	Conformant	N/A	***DRC
67	Copper (Cu)	CID003668	Fujhara Refinery	U.A.E	-	-	-
68	Copper (Cu)	CID003722	Katanga Mining	DRC	-	-	-
69	Copper (Cu)	CID003742	TSK Pretech	KOREA, REPUBLIC OF	-	-	-
70	Copper (Cu)	CID003747	Samsun Smelter and Electrolysis Plant	TURKEY	-	-	-
71	Copper (Cu)	CID003748	Kure Plant	TURKEY	-	-	-
72	Copper (Cu)	CID003749	Murgul Plant	TURKEY	-	-	-
73	Copper (Cu)	CID003754	Atlantic Nickel Santa Rita	BRAZIL	-	-	-
74	Copper (Cu)	CID003774	Apex Material Technologies	U.S.A	-	-	-
75	Copper (Cu)	CID003777	SOCIETE MINIERE DE DEZIWA SAS	DRC	-	-	-
76	Copper (Cu)	CID003790	MJM Sarlu	DRC	-	-	-
77	Copper (Cu)	CID003792	Mufulira - Mopani Copper Mines	DRC	-	-	-
78	Copper (Cu)	CID003793	MKM	DRC	-	-	-
79	Copper (Cu)	CID003794	KCC	DRC	-	-	-
80	Copper (Cu)	CID003795	Tenke Fungurume	DRC	Conformant	-	-
81	Copper (Cu)	CID003796	CDM	DRC	-	-	-
82	Copper (Cu)	CID003797	Somika	DRC	-	-	-
83	Copper (Cu)	CID003805	Societe pour le Traitement du Terril de Lubumbashi (STL)	DRC	Conformant	-	-
84	Copper (Cu)	CID003829	Minera Escondida Limitada	CHILE	-	-	-
85	Copper (Cu)	CID003872	Kisanfu Mining (Kimin)	DRC	Conformant	-	-
86	Copper (Cu)	CID003873	La Miniere de Kalukundi (LAMIKAL)	DRC	-	-	-
87	Copper (Cu)	CID003876	Besshi Copper Mine	JAPAN	-	-	-
88	Copper (Cu)	CID003877	Hishikari Mine	JAPAN	-	-	-
89	Copper (Cu)	CID003878	Toyo	JAPAN	Conformant	-	-
90	Copper (Cu)	CID003881	Niihama Refinery	JAPAN	-	-	-
91	Copper (Cu)	CID003887	Mitsui Sumitomo Metal Mining Brass & Copper Co., Ltd.	JAPAN	-	-	-

No	Metal	ID	Smelter Name	Location	RMAP Status	Direct Sourcing	Indirect Supplying Smelter Sourcing
92	Copper (Cu)	CID003898	Jinlong Copper Co., Ltd.	CHINA	-	-	-
93	Copper (Cu)	CID003900	Northparkes Mine	AUSTRALIA	-	-	-
94	Copper (Cu)	CID003901	Ojos del Salado Copper Mine	CHILE	-	-	-
95	Copper (Cu)	CID003902	Candelaria Mine	CHILE	-	-	-
96	Copper (Cu)	CID003903	Sierra Gorda Mine	CHILE	-	-	-
97	Copper (Cu)	CID003908	Da Fei Mining SARL	DRC	-	-	-
98	Copper (Cu)	CID003909	Dragon International Mining (DIM) SARL	DRC	-	-	-
99	Copper (Cu)	CID003910	Jinshan Africa Mines SPRL	DRC	-	-	-
100	Copper (Cu)	CID003916	Ganzhou Hanrui New Energy Technology Co., Ltd.	CHINA	-	-	-
101	Copper (Cu)	CID003918	Hanrui Metal (Congo) Co., Ltd. - Ore Processing	DRC	-	-	-
102	Copper (Cu)	CID003921	Jiangmen Fangyuan Cycle Technology Co., Ltd.	CHINA	-	-	-
103	Copper (Cu)	CID003931	MCC Non Ferrous Trading Inc.	U.S.A	-	-	-
104	Copper (Cu)	CID003941	Guangdong Fangyuan Environment Co., Ltd.	CHINA	-	-	-
105	Copper (Cu)	CID003948	Kolwezi Tailings (KMT, aka Kingamyambo Musonoi Tailings)	DRC	Conformant	-	-
106	Copper (Cu)	CID003982	Africo Resources/Rubicon Minerals	DRC	-	-	-
107	Copper (Cu)	CID003992	Compagnie Miniere de Musonoi Global SAS	DRC	-	-	-
108	Copper (Cu)	CID003995	JX Nippon Mining & Metals Co., Ltd.	JAPAN	-	-	-
109	Copper (Cu)	CID003996	JX Nippon Mining & Metals Co., Ltd. Hitachi	JAPAN	-	-	-
110	Copper (Cu)	CID004009	Copper plant of the Polar Division of PJSC MMC Norilsk Nickel	RUSSIA	-	-	-
111	Copper (Cu)	CID004019	Nadezhda Metallurgical Plant of MMC Norilsk Nickel's Polar Division	RUSSIA	-	-	-
112	Copper (Cu)	CID004035	Concentration Plant, GRK Bystrinskoye	RUSSIA	-	-	-
113	Copper (Cu)	CID004058	Eti Bakir A.S	TURKEY	Conformant	-	-
114	Copper (Cu)	CID004069	Coro Mining Corp.	ARGENTINA	-	-	-
115	Copper (Cu)	CID004070	Mt Cuthbert & Mt Watson Project	AUSTRALIA	-	-	-
116	Copper (Cu)	CID004071	Olympic Dam	AUSTRALIA	-	-	-
117	Copper (Cu)	CID004072	Port Kembla	AUSTRALIA	-	-	-
118	Copper (Cu)	CID004073	Port Pirie	AUSTRALIA	-	-	-
119	Copper (Cu)	CID004074	Mutanda	DRC	Conformant	-	-
120	Copper (Cu)	CID004075	Townsville	AUSTRALIA	-	-	-
121	Copper (Cu)	CID004076	Whim Creek	AUSTRALIA	-	-	-
122	Copper (Cu)	CID004077	White Range Project	AUSTRIA	-	-	-
123	Copper (Cu)	CID004078	Aurubis Beerse N.V.	BELGIUM	-	-	-

No	Metal	ID	Smelter Name	Location	RMAP Status	Direct Sourcing	Indirect Supplying Smelter Sourcing
124	Copper (Cu)	CID004080	Aurubis Olen nv	BELGIUM	-	-	-
125	Copper (Cu)	CID004081	Corocoro	BOLIVIA	-	-	-
126	Copper (Cu)	CID004082	118 Project	BRAZIL	-	-	-
127	Copper (Cu)	CID004083	Caraiba Metais S.A. (Paranapanema S.A.)	BRAZIL	-	-	-
128	Copper (Cu)	CID004084	Vale UHC	BRAZIL	-	-	-
129	Copper (Cu)	CID004085	Aurubis Bulgaria	BULGARIA	-	-	-
130	Copper (Cu)	CID004086	Granite Creek Copper	CANADA	-	-	-
131	Copper (Cu)	CID004087	CCR Refinery - Glencore Canada Corporation	CANADA	-	-	-
132	Copper (Cu)	CID004088	The Metals Company	CANADA	-	-	-
133	Copper (Cu)	CID004089	Gibraltar	CANADA	-	-	-
134	Copper (Cu)	CID004090	Glencore Kidd Creek	CANADA	-	-	-
135	Copper (Cu)	CID004091	Vale Inco Ltd.	CANADA	-	-	-
136	Copper (Cu)	CID004092	CEMIN	CHILE	-	-	-
137	Copper (Cu)	CID004093	Andacollo	CHILE	-	-	-
138	Copper (Cu)	CID004094	Antucoya	CHILE	-	-	-
139	Copper (Cu)	CID004095	Berta	CHILE	-	-	-
140	Copper (Cu)	CID004096	Caserones	CHILE	-	-	-
141	Copper (Cu)	CID004097	Cerro Colorado	CHILE	-	-	-
142	Copper (Cu)	CID004098	Cerro Dominador	CHILE	-	-	-
143	Copper (Cu)	CID004099	Cerro Negro	CHILE	-	-	-
144	Copper (Cu)	CID004100	Chañaral	CHILE	-	-	-
145	Copper (Cu)	CID004101	Chuquicamata Refinery	CHILE	-	-	-
146	Copper (Cu)	CID004103	Collahuasi	CHILE	-	-	-
147	Copper (Cu)	CID004104	Diego de Almagro	CHILE	-	-	-
148	Copper (Cu)	CID004105	Dos Amigos	CHILE	-	-	-
149	Copper (Cu)	CID004106	El Abra	CHILE	-	-	-
150	Copper (Cu)	CID004107	El Espino	CHILE	-	-	-
151	Copper (Cu)	CID004108	El Soldado	CHILE	-	-	-
152	Copper (Cu)	CID004109	El Teniente	CHILE	-	-	-
153	Copper (Cu)	CID004111	El Tesoro / Encuentro Oxides	CHILE	-	-	-
154	Copper (Cu)	CID004112	Escondida	CHILE	-	-	-
155	Copper (Cu)	CID004113	Filo del Sol	CHILE	-	-	-
156	Copper (Cu)	CID004114	Franke	CHILE	-	-	-
157	Copper (Cu)	CID004115	Division Gabriela Mistral	CHILE	-	-	-
158	Copper (Cu)	CID004116	Ivan/Zar	CHILE	-	-	-
159	Copper (Cu)	CID004117	La Cascada (Sagasca)	CHILE	-	-	-
160	Copper (Cu)	CID004118	Las Ventanas	CHILE	-	-	-
161	Copper (Cu)	CID004119	Lomas Bayas	CHILE	-	-	-

No	Metal	ID	Smelter Name	Location	RMAP Status	Direct Sourcing	Indirect Supplying Smelter Sourcing
162	Copper (Cu)	CID004120	Los Bronces	CHILE	-	-	-
163	Copper (Cu)	CID004121	Mantos Blancos	CHILE	-	-	-
164	Copper (Cu)	CID004122	Mantos de la Luna	CHILE	-	-	-
165	Copper (Cu)	CID004123	Mantoverde	CHILE	-	-	-
166	Copper (Cu)	CID004124	Marimaca	CHILE	-	-	-
167	Copper (Cu)	CID004125	Michilla	CHILE	-	-	-
168	Copper (Cu)	CID004126	Puquios	CHILE	-	-	-
169	Copper (Cu)	CID004127	Quebrada Blanca	CHILE	-	-	-
170	Copper (Cu)	CID004128	Division Radomiro Tomic	CHILE	-	-	-
171	Copper (Cu)	CID004129	Salamanqueja	CHILE	-	-	-
172	Copper (Cu)	CID004130	Salvador (Potrerillos)	CHILE	-	-	-
173	Copper (Cu)	CID004131	Division Salvador	CHILE	-	-	-
174	Copper (Cu)	CID004132	San Jose (Socavon)	CHILE	-	-	-
175	Copper (Cu)	CID004134	Sierra Miranda	CHILE	-	-	-
176	Copper (Cu)	CID004136	Taltal Oxidos	CHILE	-	-	-
177	Copper (Cu)	CID004137	Tovaku	CHILE	-	-	-
178	Copper (Cu)	CID004138	Tres Valles	CHILE	-	-	-
179	Copper (Cu)	CID004139	Various Small mines	CHILE	-	-	-
180	Copper (Cu)	CID004140	Zaldivar	CHILE	-	-	-
181	Copper (Cu)	CID004141	Baiyin	CHINA	-	-	-
182	Copper (Cu)	CID004142	Changzhou Copper	CHINA	-	-	-
183	Copper (Cu)	CID004144	Chinalco Southeast Copper	CHINA	-	-	-
184	Copper (Cu)	CID004146	Tianjin Datong Copper Industry Co., Ltd.	CHINA	-	-	-
185	Copper (Cu)	CID004147	Daye Non-Ferrous Metals Mining Ltd.	CHINA	-	-	-
186	Copper (Cu)	CID004148	Fuchunjiang	CHINA	-	-	-
187	Copper (Cu)	CID004152	Hongsheng Copper	CHINA	-	-	-
188	Copper (Cu)	CID004153	Huludao	CHINA	-	-	-
189	Copper (Cu)	CID004154	Humon	CHINA	-	-	-
190	Copper (Cu)	CID004155	Hunchun	CHINA	-	-	-
191	Copper (Cu)	CID004156	Jinchang (Tongling II)	CHINA	-	-	-
192	Copper (Cu)	CID004157	Jinchuan	CHINA	-	-	-
193	Copper (Cu)	CID004158	Jinchuan (Fangchenggang refinery)	CHINA	-	-	-
194	Copper (Cu)	CID004159	Jintong	CHINA	-	-	-
195	Copper (Cu)	CID004161	Jinguan	CHINA	-	-	-
196	Copper (Cu)	CID004162	Jiangxi Copper Qingyuan	CHINA	-	-	-
197	Copper (Cu)	CID004163	Jintian	CHINA	-	-	-
198	Copper (Cu)	CID004164	Keta Metal	CHINA	-	-	-

No	Metal	ID	Smelter Name	Location	RMAP Status	Direct Sourcing	Indirect Supplying Smelter Sourcing
199	Copper (Cu)	CID004165	Lihua	CHINA	-	-	-
200	Copper (Cu)	CID004166	Meizhou Jinyan	CHINA	-	-	-
201	Copper (Cu)	CID004167	Nanguo Copper	CHINA	-	-	-
202	Copper (Cu)	CID004168	Qinghai copper	CHINA	-	-	-
203	Copper (Cu)	CID004169	Ruichang Copper	CHINA	-	-	-
204	Copper (Cu)	CID004170	Sanmenxia	CHINA	-	-	-
205	Copper (Cu)	CID004171	Shandong Fangyuan	CHINA	-	-	-
206	Copper (Cu)	CID004172	Shandong Jinsheng	CHINA	-	-	-
207	Copper (Cu)	CID004173	Shandong Luxiang	CHINA	-	-	-
208	Copper (Cu)	CID004174	Shuikoushan	CHINA	-	-	-
209	Copper (Cu)	CID004175	Taichang	CHINA	-	-	-
210	Copper (Cu)	CID004178	Wunuketushan	CHINA	-	-	-
211	Copper (Cu)	CID004179	Wuxin Copper	CHINA	-	-	-
212	Copper (Cu)	CID004180	Xiangguang copper	CHINA	-	-	-
213	Copper (Cu)	CID004181	Yantai Penghui Copper Industry Co., Ltd.	CHINA	-	-	-
214	Copper (Cu)	CID004182	Yantai Guoxing	CHINA	-	-	-
215	Copper (Cu)	CID004183	Yubei Copper Fabricating	CHINA	-	-	-
216	Copper (Cu)	CID004184	Yuguang	CHINA	-	-	-
217	Copper (Cu)	CID004185	Yulong	CHINA	-	-	-
218	Copper (Cu)	CID004186	Yunnan Copper	CHINA	-	-	-
219	Copper (Cu)	CID004187	Yunan Tin	CHINA	-	-	-
220	Copper (Cu)	CID004188	Zhangjiagang	CHINA	-	-	-
221	Copper (Cu)	CID004189	Zhongtiaoshan (Houma)	CHINA	-	-	-
222	Copper (Cu)	CID004190	Zhongtiaoshan (Yuanqu)	CHINA	-	-	-
223	Copper (Cu)	CID004192	Zijinshan	CHINA	-	-	-
224	Copper (Cu)	CID004193	Deziwa & Ecaille C	DRC	-	-	-
225	Copper (Cu)	CID004194	Dikuluwe & Mashamba Ouest	DRC	-	-	-
226	Copper (Cu)	CID004195	Etoile	DRC	-	-	-
227	Copper (Cu)	CID004196	Huachin	DRC	-	-	-
228	Copper (Cu)	CID004197	Kakanda Proejct	DRC	-	-	-
229	Copper (Cu)	CID004198	Kambove	DRC	-	-	-
230	Copper (Cu)	CID004199	Kamboya (COMIKA)	DRC	-	-	-
231	Copper (Cu)	CID004201	MMG Kinsevere SARL	DRC	Active	-	-
232	Copper (Cu)	CID004202	Kipoi	DRC	-	-	-
233	Copper (Cu)	CID004203	Kolwezi Copper Mine	DRC	-	-	-
234	Copper (Cu)	CID004204	Kolwezi Tailings	DRC	-	-	-
235	Copper (Cu)	CID004205	KOV	DRC	-	-	-
236	Copper (Cu)	CID004206	LUILU RESSOURCES SAS	DRC	Active	-	-

No	Metal	ID	Smelter Name	Location	RMAP Status	Direct Sourcing	Indirect Supplying Smelter Sourcing
237	Copper (Cu)	CID004207	Luita	DRC	-	-	-
238	Copper (Cu)	CID004208	Mabende	DRC	-	-	-
239	Copper (Cu)	CID004209	Musonoi	DRC	-	-	-
240	Copper (Cu)	CID004211	Pumpi	DRC	-	-	-
241	Copper (Cu)	CID004213	Shituru Refinery	DRC	-	-	-
242	Copper (Cu)	CID004215	Hellenic Copper Mines	CYPRUS	-	-	-
243	Copper (Cu)	CID004216	General Metals Co. (GEMET)	EGYPT	-	-	-
244	Copper (Cu)	CID004217	Red Sea Copper	EGYPT	-	-	-
245	Copper (Cu)	CID004218	Boliden Kokkola Oy	FINLAND	-	-	-
246	Copper (Cu)	CID004219	Pori	FINLAND	-	-	-
247	Copper (Cu)	CID004220	Aurubis Hamburg	GERMANY	-	-	-
248	Copper (Cu)	CID004221	Aurubis Huettenwerke Kayser	GERMANY	-	-	-
249	Copper (Cu)	CID004222	KME Germany GmbH	GERMANY	-	-	-
250	Copper (Cu)	CID004223	Adani Entreprises	INDIA	-	-	-
251	Copper (Cu)	CID004224	Birla Group (Hidalco)	INDIA	-	-	-
252	Copper (Cu)	CID004225	Ghatsila	INDIA	-	-	-
253	Copper (Cu)	CID004226	Jhagadia (Gujarat)	INDIA	-	-	-
254	Copper (Cu)	CID004227	Khetri Refinery	INDIA	-	-	-
255	Copper (Cu)	CID004228	Vedanta Limited-Sterlite Copper	INDIA	Conformant	-	-
256	Copper (Cu)	CID004229	Antam	INDONESIA	-	-	-
257	Copper (Cu)	CID004230	BKM	INDONESIA	-	-	-
258	Copper (Cu)	CID004232	Gresik	INDONESIA	-	-	-
259	Copper (Cu)	CID004233	Maros	INDONESIA	-	-	-
260	Copper (Cu)	CID004234	Medco	INDONESIA	-	-	-
261	Copper (Cu)	CID004235	Wetar	INDONESIA	-	-	-
262	Copper (Cu)	CID004236	Babak	IRAN	-	-	-
263	Copper (Cu)	CID004237	Chah MoU.S.A	IRAN	-	-	-
264	Copper (Cu)	CID004238	Khatoon Abad	IRAN	-	-	-
265	Copper (Cu)	CID004239	Miduk	IRAN	-	-	-
266	Copper (Cu)	CID004240	Sarchesmeh	IRAN	-	-	-
267	Copper (Cu)	CID004241	Sungun	IRAN	-	-	-
268	Copper (Cu)	CID004242	AHMSA Steel Israel Ltd	ISRAEL	-	-	-
269	Copper (Cu)	CID004243	KME Group	ITALY	-	-	-
270	Copper (Cu)	CID004244	VCO Copper SpA	ITALY	-	-	-
271	Copper (Cu)	CID004245	Hitachi	JAPAN	-	-	-
272	Copper (Cu)	CID004246	Kosaka	JAPAN	-	-	-
273	Copper (Cu)	CID004247	Naoshima	JAPAN	-	-	-
274	Copper (Cu)	CID004248	Onahama	JAPAN	-	-	-
275	Copper (Cu)	CID004249	Saganoseki	JAPAN	-	-	-

No	Metal	ID	Smelter Name	Location	RMAP Status	Direct Sourcing	Indirect Supplying Smelter Sourcing
276	Copper (Cu)	CID004250	Hibi Kyodo Smelting Co., Ltd., Tamano Smelter	JAPAN	-	-	-
277	Copper (Cu)	CID004252	Kaz Minerals Aktogay	KAZAKHSTAN	-	-	-
278	Copper (Cu)	CID004253	Kaz Minerals Balkash	KAZAKHSTAN	-	-	-
279	Copper (Cu)	CID004254	KazCopper LLP	KAZAKHSTAN	-	-	-
280	Copper (Cu)	CID004255	Karchiga	KAZAKHSTAN	-	-	-
281	Copper (Cu)	CID004256	Kounrad Mine Refinery	KAZAKHSTAN	-	-	-
282	Copper (Cu)	CID004257	Kazzin	KAZAKHSTAN	-	-	-
283	Copper (Cu)	CID004258	Cuprum Holding	KAZAKHSTAN	-	-	-
284	Copper (Cu)	CID004259	Korea Zinc Co., Ltd.	KOREA, REPUBLIC OF	-	-	-
285	Copper (Cu)	CID004262	Chifeng Jilong Gold Mining Co Ltd	LAOS	-	-	-
286	Copper (Cu)	CID004263	Solway Industries Ltd	NORTH MACEDONIA	-	-	-
287	Copper (Cu)	CID004264	Sardich MC (Copin Group)	NORTH MACEDONIA	-	-	-
288	Copper (Cu)	CID004265	Boleo	MEXICO	-	-	-
289	Copper (Cu)	CID004266	Buenavista del Cobre (former Cananea)	MEXICO	-	-	-
290	Copper (Cu)	CID004267	El Arco	MEXICO	-	-	-
291	Copper (Cu)	CID004268	El Pilar	MEXICO	-	-	-
292	Copper (Cu)	CID004269	Empalme	MEXICO	-	-	-
293	Copper (Cu)	CID004270	La Balsa	MEXICO	-	-	-
294	Copper (Cu)	CID004271	Unidad La Caridad	MEXICO	-	-	-
295	Copper (Cu)	CID004272	Luz del Cobre	MEXICO	-	-	-
296	Copper (Cu)	CID004273	Milpillas	MEXICO	-	-	-
297	Copper (Cu)	CID004274	Minera Maria	MEXICO	-	-	-
298	Copper (Cu)	CID004275	Piedras Verdes	MEXICO	-	-	-
299	Copper (Cu)	CID004276	San Javier (Cerro Verde area)	MEXICO	-	-	-
300	Copper (Cu)	CID004277	Terrazas (Cerro Verdo area)	MEXICO	-	-	-
301	Copper (Cu)	CID004278	Achit Ikht Co.	MONGOLIA	-	-	-
302	Copper (Cu)	CID004279	Erdenet Mining Corporation	MONGOLIA	-	-	-
303	Copper (Cu)	CID004280	Mongolyn Alt (MAK)	MONGOLIA	-	-	-
304	Copper (Cu)	CID004281	Mongolia Refinery	MONGOLIA	-	-	-
305	Copper (Cu)	CID004282	Monywa Lepataung Copper Mine	MYANMAR	-	-	-
306	Copper (Cu)	CID004283	Monywa Sabetauung and Kyisintaung	MYANMAR	-	-	-
307	Copper (Cu)	CID004284	Deep-South Resources Inc.	NAMIBIA	-	-	-
308	Copper (Cu)	CID004285	Weatherly Mining Namibia	NAMIBIA	-	-	-
309	Copper (Cu)	CID004286	Nampo Refinery	NORTH KOREA	-	-	-
310	Copper (Cu)	CID004287	Tanchon (Hungnam)	NORTH KOREA	-	-	-

No	Metal	ID	Smelter Name	Location	RMAP Status	Direct Sourcing	Indirect Supplying Smelter Sourcing
311	Copper (Cu)	CID004288	Glencore Nikkelverk AS	NORWAY	-	-	-
312	Copper (Cu)	CID004289	Oman Mining Co., LLC	OMAN	-	-	-
313	Copper (Cu)	CID004290	Antilla	PERU	-	-	-
314	Copper (Cu)	CID004293	Chapi	PERU	-	-	-
315	Copper (Cu)	CID004294	Coroccohuayco	PERU	-	-	-
316	Copper (Cu)	CID004295	Ilo Copper Refinery	PERU	-	-	-
317	Copper (Cu)	CID004296	La Granja	PERU	-	-	-
318	Copper (Cu)	CID004297	La Oroya Refinery	PERU	-	-	-
319	Copper (Cu)	CID004298	Los Chancas	PERU	-	-	-
320	Copper (Cu)	CID004299	Lunahuana	PERU	-	-	-
321	Copper (Cu)	CID004300	Mina Justa	PERU	-	-	-
322	Copper (Cu)	CID004301	Tia Maria	PERU	-	-	-
323	Copper (Cu)	CID004302	Tintaya	PERU	-	-	-
324	Copper (Cu)	CID004303	Toquepala	PERU	-	-	-
325	Copper (Cu)	CID004304	Isabel/ Leyte (PASAR)	PHILIPPINES	-	-	-
326	Copper (Cu)	CID004305	King King	PHILIPPINES	-	-	-
327	Copper (Cu)	CID004308	Legnica	POLAND	-	-	-
328	Copper (Cu)	CID004309	Gumeshevskoye	RUSSIA	-	-	-
329	Copper (Cu)	CID004310	Kola Refinery	RUSSIA	-	-	-
330	Copper (Cu)	CID004311	Kyshtym Copper-Electrolytic Plant	RUSSIA	-	-	-
331	Copper (Cu)	CID004312	Monchegorsk	RUSSIA	-	-	-
332	Copper (Cu)	CID004313	Murmansk	RUSSIA	-	-	-
333	Copper (Cu)	CID004315	Novgorod	RUSSIA	-	-	-
334	Copper (Cu)	CID004316	Pyshma Refinery	RUSSIA	-	-	-
335	Copper (Cu)	CID004317	Yuzhuralnikel	RUSSIA	-	-	-
336	Copper (Cu)	CID004318	Udokan	RUSSIA	-	-	-
337	Copper (Cu)	CID004319	Ras Al-Khair	SAUDI ARABIA	-	-	-
338	Copper (Cu)	CID004320	RTB Bor	SERBIA	-	-	-
339	Copper (Cu)	CID004322	Western Platinum	SOUTH AFRICA	-	-	-
340	Copper (Cu)	CID004323	Metal Sales Co. Pty	SOUTH AFRICA	-	-	-
341	Copper (Cu)	CID004324	Palabora Mining Co.	SOUTH AFRICA	-	-	-
342	Copper (Cu)	CID004325	Anglo American Platinum Corp.	SOUTH AFRICA	-	-	-
343	Copper (Cu)	CID004326	La Farga	SPAIN	-	-	-
344	Copper (Cu)	CID004327	Atlantic Copper S.A.	SPAIN	-	-	-
345	Copper (Cu)	CID004328	First Quantum Minerals Ltd	SPAIN	-	-	-
346	Copper (Cu)	CID004330	Puthep	THAILAND	-	-	-

No	Metal	ID	Smelter Name	Location	RMAP Status	Direct Sourcing	Indirect Supplying Smelter Sourcing
347	Copper (Cu)	CID004331	ER Bakir Elektrolitik	TURKEY	-	-	-
348	Copper (Cu)	CID004332	Sarkuysan Electrolytic Copper Ltd.	TURKEY	-	-	-
349	Copper (Cu)	CID004333	HES Hacilar Elektrik Sanayi ve Ticaret A.S.	TURKEY	-	-	-
350	Copper (Cu)	CID004334	Elektrosan A.S.	TURKEY	-	-	-
351	Copper (Cu)	CID004336	Artemov	UKRAINE	-	-	-
352	Copper (Cu)	CID004337	Pancomm	UKRAINE	-	-	-
353	Copper (Cu)	CID004338	Amarillo	U.S.A	-	-	-
354	Copper (Cu)	CID004339	Bagdad	U.S.A	-	-	-
355	Copper (Cu)	CID004340	Carlota	U.S.A	-	-	-
356	Copper (Cu)	CID004341	Chino	U.S.A	-	-	-
357	Copper (Cu)	CID004342	Chloride Copper Mine (Emerald Isle)	U.S.A	-	-	-
358	Copper (Cu)	CID004344	El Paso (refinery)	U.S.A	-	-	-
359	Copper (Cu)	CID004345	Empire Mine	U.S.A	-	-	-
360	Copper (Cu)	CID004346	Florence	U.S.A	-	-	-
361	Copper (Cu)	CID004347	Garfield	U.S.A	-	-	-
362	Copper (Cu)	CID004348	Gunnison	U.S.A	-	-	-
363	Copper (Cu)	CID004349	Idaho Cobalt Project	U.S.A	-	-	-
364	Copper (Cu)	CID004350	Indiana	U.S.A	-	-	-
365	Copper (Cu)	CID004351	Johnson Camp	U.S.A	-	-	-
366	Copper (Cu)	CID004352	Lisbon Valley	U.S.A	-	-	-
367	Copper (Cu)	CID004353	Miami (SX-EW)	U.S.A	-	-	-
368	Copper (Cu)	CID004354	Milford	U.S.A	-	-	-
369	Copper (Cu)	CID004355	Mineral Park	U.S.A	-	-	-
370	Copper (Cu)	CID004356	Morenci	U.S.A	-	-	-
371	Copper (Cu)	CID004357	New Haven Refinery	U.S.A	-	-	-
372	Copper (Cu)	CID004358	Phoenix (SX-EW)	U.S.A	-	-	-
373	Copper (Cu)	CID004359	Pinto Valley	U.S.A	-	-	-
374	Copper (Cu)	CID004360	Ray	U.S.A	-	-	-
375	Copper (Cu)	CID004361	Reading	U.S.A	-	-	-
376	Copper (Cu)	CID004362	Safford	U.S.A	-	-	-
377	Copper (Cu)	CID004363	Sierrita	U.S.A	-	-	-
378	Copper (Cu)	CID004364	Silver Bell	U.S.A	-	-	-
379	Copper (Cu)	CID004365	Tohono (Casa Grande)	U.S.A	-	-	-
380	Copper (Cu)	CID004366	Twin Metals Minnesota	U.S.A	-	-	-
381	Copper (Cu)	CID004367	Tyrone	U.S.A	-	-	-
382	Copper (Cu)	CID004368	Van Dyke	U.S.A	-	-	-
383	Copper (Cu)	CID004369	White Pine (refinery)	U.S.A	-	-	-

No	Metal	ID	Smelter Name	Location	RMAP Status	Direct Sourcing	Indirect Supplying Smelter Sourcing
384	Copper (Cu)	CID004370	Zonia	U.S.A	-	-	-
385	Copper (Cu)	CID004371	Almalyk Mining and Metallurgical Complex (AMMC)	UZBEKISTAN	-	-	-
386	Copper (Cu)	CID004372	Vietnam National Coal and Mineral Industries Group (Vinacomin)	VIET NAM	-	-	-
387	Copper (Cu)	CID004373	Bwana Mkubwa	ZAMBIA	-	-	-
388	Copper (Cu)	CID004374	Chambishi	ZAMBIA	-	-	-
389	Copper (Cu)	CID004375	Chingola Refractory Ore	ZAMBIA	-	-	-
390	Copper (Cu)	CID004376	Ichimpe	ZAMBIA	-	-	-
391	Copper (Cu)	CID004377	Kakoso	ZAMBIA	-	-	-
392	Copper (Cu)	CID004378	Kangaluwi-Chisawa	ZAMBIA	-	-	-
393	Copper (Cu)	CID004379	Kansanshi	ZAMBIA	-	-	-
394	Copper (Cu)	CID004380	Kitumba	ZAMBIA	-	-	-
395	Copper (Cu)	CID004381	Mashiba	ZAMBIA	-	-	-
396	Copper (Cu)	CID004382	Mimbula	ZAMBIA	-	-	-
397	Copper (Cu)	CID004383	Mufulira & Nkana	ZAMBIA	-	-	-
398	Copper (Cu)	CID004384	Mufulira Refinery	ZAMBIA	-	-	-
399	Copper (Cu)	CID004385	Muliashi	ZAMBIA	-	-	-
400	Copper (Cu)	CID004386	Nchanga TLP	ZAMBIA	-	-	-
401	Copper (Cu)	CID004387	NKANA COPPER REFINERY - Nkana (Kitwe)	ZAMBIA	Conformant	-	-
402	Copper (Cu)	CID004388	Nkana Slag Dumps / Chambishi Cobalt Plant	ZAMBIA	-	-	-
403	Copper (Cu)	CID004389	Sable Zinc Kabwe Ltd.	ZAMBIA	-	-	-
404	Copper (Cu)	CID004390	Rio Tinto Mining (Zimbabwe) Ltd.	ZIMBABWE	-	-	-
405	Copper (Cu)	CID004394	Kamoto Copper Company	DRC	Conformant	-	-
406	Copper (Cu)	CID004427	Vale - Long Harbour Processing Plant (LHPP)	CANADA	-	-	-
407	Copper (Cu)	CID004428	Vale Copper Cliff Nickel Refinery	CANADA	-	-	-
408	Copper (Cu)	CID004429	Mount Isa Mines Limited - Copper Refineries Pty Ltd (CRL)	AUSTRALIA	-	-	-
409	Copper (Cu)	CID004442	Boliden Harjavalta Oy	FINLAND	-	-	-
410	Copper (Cu)	CID004459	Oyu Tolgoi LLC	MONGOLIA	-	-	-
411	Copper (Cu)	CID004460	Sociedad Minera Cerro Verde S.A.A.	PERU	-	-	-
412	Copper (Cu)	CID004461	Sociedad Contractual Minera El Abra	CHILE	-	-	-
413	Copper (Cu)	CID004462	KGHM Polska Miedz S.A. Oddzial Huta Miedzi, Glogow	POLAND	-	-	-
414	Copper (Cu)	CID004463	KGHM Polska Miedz S.A. Oddzial Huta Miedzi, Legnica	POLAND	-	-	-
415	Copper (Cu)	CID004464	Minera Spence S.A.	CHILE	-	-	-
416	Copper (Cu)	CID004465	Minera Centinela	CHILE	-	-	-

No	Metal	ID	Smelter Name	Location	RMAP Status	Direct Sourcing	Indirect Supplying Smelter Sourcing
417	Copper (Cu)	CID004466	Compania Minera Zaldivar SpA	CHILE	-	-	-
418	Copper (Cu)	CID004467	Compania Minera Condestable S.A (CMC)	PERU	-	-	-
419	Copper (Cu)	CID004468	Aurubis AG, Luenen	GERMANY	-	-	-
420	Copper (Cu)	CID004469	Highland Valley Copper Partnership	CANADA	-	-	-
421	Copper (Cu)	CID004470	Anglo American (Chagres)	CHILE	-	-	-
422	Copper (Cu)	CID004471	Minera Los Pelambres	CHILE	-	-	-
423	Copper (Cu)	CID004472	Metalurgica de Cobre S.A. de C.V. (Unidad Planta Metalurgica)	MEXICO	-	-	-
424	Copper (Cu)	CID004473	Boliden Ronnskar	SWEDEN	-	-	-
425	Copper (Cu)	CID004474	PT Freeport Indonesia (PT-FI) Grasberg	INDONESIA	-	-	-
426	Copper (Cu)	CID004475	Essex Furukawa Magnet Wire U.S.A LLC, Fort Wayne Plant	U.S.A	-	-	-
427	Copper (Cu)	CID004476	Essex Furukawa Magnet Wire U.S.A LLC, Franklin Plant	U.S.A	-	-	-
428	Copper (Cu)	CID004477	Essex Furukawa Magnet Wire U.S.A LLC, Columbia City Plant	U.S.A	-	-	-
429	Copper (Cu)	CID004478	Grupo Essex Furukawa de Mexico, S. de R.L. de C.V.: Torreon, Coahuila, Mexico (Torreon)	MEXICO	-	-	-
430	Copper (Cu)	CID004479	Southwire Company, LLC (Carrollton Rod Mill)	U.S.A	-	-	-
431	Copper (Cu)	CID004480	Southwire Company, LLC (Denton)	U.S.A	-	-	-
432	Copper (Cu)	CID004481	KGHM Polska Miedz S.A. Oddzial Huta Miedzi "Cedynia"	POLAND	-	-	-
433	Copper (Cu)	CID004482	Nexans LENS Plant	FRANCE	-	-	-
434	Copper (Cu)	CID004483	KME Italy SpA	ITALY	-	-	-
435	Copper (Cu)	CID004485	KME Mansfeld GmbH	GERMANY	-	-	-
436	Copper (Cu)	CID004486	Nexans Montreal-East Plant	CANADA	-	-	-
437	Copper (Cu)	CID004487	Codelco Division Andina	CHILE	-	-	-
438	Copper (Cu)	CID004488	Southwire Company, LLC (Lafayette)	U.S.A	-	-	-
439	Copper (Cu)	CID004489	Southwire Company, LLC (Bremen)	U.S.A	-	-	-
440	Copper (Cu)	CID004490	Codelco Division Ministro Hales	CHILE	-	-	-
441	Copper (Cu)	CID004601	KIK Mining SASU	DRC	-	-	-
442	Copper (Cu)	CID004607	Impala Platinum - Base Metal Refinery (BMR)	SOUTH AFRICA	Conformant	-	-
443	Copper (Cu)	CID004613	Impala Platinum - Rustenburg Smelter	SOUTH AFRICA	Conformant	-	-
444	Copper (Cu)	CID004687	Excellen Minerals SARL	DRC	Active	-	-
445	Copper (Cu)	CID004689	Ascend Elements, Inc. (Appex)	U.S.A	-	-	-
446	Copper (Cu)	CID004729	LS MnM (ONSAN)	KOREA, REPUBLIC OF	-	-	-

No	Metal	ID	Smelter Name	Location	RMAP Status	Direct Sourcing	Indirect Supplying Smelter Sourcing
447	Copper (Cu)	CID004746	SOCIETE MINIERE DU KATANGA (Lupoto Plant)	DRC	Conformant	-	-
448	Copper (Cu)	CID004812	CMOC Kisanfu Mining SARL	DRC	Conformant	-	-
449	Copper (Cu)	CID005015	Ruashi Mining SAS	DRC	Active	-	-
450	Copper (Cu)	CID005025	Innovative Circuits Inc.	U.S.A	-	-	-
451	Copper (Cu)	CID005035	Contract Solutions Scotland Limited	UNITED KINGDOM	-	-	-
452	Copper (Cu)	CID005059	Jiangsu Dartong M&E Co., Ltd.	CHINA	-	-	-
453	Copper (Cu)	CID005066	Lao Cai Copper Smelter	VIET NAM	-	-	-
454	Copper (Cu)	CID005174	QuickCircuit Ltd	NEW ZEALAND	-	-	-
455	Copper (Cu)	CID005176	Zijin Copper Co., Ltd.	CHINA	-	-	-
456	Copper (Cu)	CID005200	Balikesir Balya Lead & Zinc Mine	TURKEY	Active	-	-
457	Copper (Cu)	CID005274	Kennecott Utah Copper LLC	U.S.A	-	-	-
458	Copper (Cu)	CID005284	Chambishi Copper Smelter Limited	ZAMBIA	-	-	-
459	Copper (Cu)	CID005285	Kansanshi Copper Smelter	ZAMBIA	Active	-	-
460	Copper (Cu)	CID005289	Young Poong Sukpo Smelter	KOREA, REPUBLIC OF	Active	-	-
461	Copper (Cu)	CID005329	Zimbabwe Platinum Mines Private Limited	ZIMBABWE	Active	-	-
462	Copper (Cu)	CID005350	Yunnan Copper Southwest Copper Branch	CHINA	-	-	-
463	Copper (Cu)	CID005351	Tongling (Jinguan) Nonferrous Jinguan Copper Industry	CHINA	-	-	-
464	Copper (Cu)	CID005354	Fairsky Industrial Co., Limited	CHINA	-	-	-
465	Graphite	CID003906	Balama Graphite Operation	MOZAMBIQUE	-	-	-
466	Graphite	CID004764	Nacional De Grafite (Itapecerica)	BRAZIL	-	-	-
467	Graphite	CID004765	Zavalye graphite field	UKRAINE	-	-	-
468	Graphite	CID004766	Northern Graphite Corporation (Lac des Iles)	CANADA	-	-	-
469	Graphite	CID004767	Maiquinique	BRAZIL	-	-	-
470	Graphite	CID004768	Eagle Graphite (Black Crystal Quarry)	CANADA	-	-	-
471	Graphite	CID004769	Skaland Graphite AS	NORWAY	-	-	-
472	Graphite	CID004770	Tirupati Graphite (Vatovina Project)	MADAGASCAR	-	-	-
473	Graphite	CID004771	Triton Minerals (Ancuabe Graphite Project)	MOZAMBIQUE	-	-	-
474	Graphite	CID004772	iTech Minerals (Campoona Graphite Project)	AUSTRALIA	-	-	-
475	Graphite	CID004773	Talga Group (Nunasvaara South Mine)	SWEDEN	-	-	-
476	Graphite	CID004774	Black Rock Mining (Mahenge Project)	TANZANIA	-	-	-
477	Graphite	CID004775	Uranex Tanzania Limited (Nachu Graphite Mine)	TANZANIA	-	-	-

No	Metal	ID	Smelter Name	Location	RMAP Status	Direct Sourcing	Indirect Supplying Smelter Sourcing
478	Graphite	CID004776	Kudu Graphite Limited (Chilalo Graphite Project)	TANZANIA	-	-	-
479	Graphite	CID004777	Walkabout Resources (Lindi Jumbo Graphite Project)	TANZANIA	-	-	-
480	Graphite	CID004778	China Minmetals Group (Heilongjiang) Graphite Industry Co	CHINA	-	-	-
481	Graphite	CID004779	South Graphite Co	CHINA	-	-	-
482	Graphite	CID004780	Jixi Changyuan Minng Co	CHINA	-	-	-
483	Graphite	CID004782	Luobei Haida graphite Co	CHINA	-	-	-
484	Graphite	CID004783	Qingdao Haida graphite Co	CHINA	-	-	-
485	Graphite	CID004784	Inner Mongolia Rising New Energy Company	CHINA	-	-	-
486	Graphite	CID004785	Siviour Graphite	AUSTRALIA	-	-	-
487	Graphite	CID004786	Graphex Technologies	U.S.A	-	-	-
488	Graphite	CID004787	Nacional De Grafite (Pedra Azul)	BRAZIL	-	-	-
489	Graphite	CID004788	Nacional De Grafite (Salto da Divisa)	BRAZIL	-	-	-
490	Graphite	CID004789	Eagle Graphite (Black Crystal Plant)	CANADA	-	-	-
491	Graphite	CID004790	Tirupati Graphite (Shamamy Project)	MADAGASCAR	-	-	-
492	Graphite	CID004791	Magnis Technologies Tanzania Limited (Nachu Processing Plant)	TANZANIA	-	-	-
493	Graphite	CID005038	Guangdong Kaijin New Energy Technology Co., Ltd.	CHINA	-	-	-
494	Graphite	CID005039	BTR New Energy Materials indonesia	INDONESIA	-	-	-
495	Graphite	CID005040	BTR New Energy Materials Shenzhen	CHINA	-	-	-
496	Graphite	CID005041	Fujian Xiang Fenghuaxin Energy Materials Co. Ltd.	CHINA	-	-	-
497	Graphite	CID005042	Hunan Zhongke Shinzoom Technology Co., Ltd.	CHINA	-	-	-
498	Graphite	CID005043	Huzhou Kaijin New Energy Technology Co., Ltd.	CHINA	-	-	-
499	Graphite	CID005044	Jiangxi Xicheng	CHINA	-	-	-
500	Graphite	CID005045	Jiangxi Zichen Technology Co., Ltd.	CHINA	-	-	-
501	Graphite	CID005046	Kaijin CHINA	CHINA	-	-	-
502	Graphite	CID005047	Kaijin Mongolia	MONGOLIA	-	-	-
503	Graphite	CID005048	Nihon Denkai	JAPAN	-	-	-
504	Graphite	CID005049	Ningbo Shanshan New Material Tech Co., Ltd.	CHINA	-	-	-
505	Graphite	CID005050	Nouveau Monde Graphite	CANADA	-	-	-
506	Graphite	CID005051	POSCO Future M Co., Ltd.	KOREA, REPUBLIC OF	-	-	-

No	Metal	ID	Smelter Name	Location	RMAP Status	Direct Sourcing	Indirect Supplying Smelter Sourcing
507	Graphite	CID005052	Qingdao Longdi Carbon Materials Tech Co., Ltd.	CHINA	-	-	-
508	Graphite	CID005053	SGL Carbon GmbH	GERMANY	-	-	-
509	Graphite	CID005054	SK Nexilis	KOREA, REPUBLIC OF	-	-	-
510	Graphite	CID005055	Syrax Resources	MOZAMBIQUE	-	-	-
511	Graphite	CID005056	Zhanjiang Juxin New Energy Co., Ltd.	CHINA	-	-	-
512	Lithium (Li)	CID003708	SQM Salar S.A.	CHILE	-	-	-
513	Lithium (Li)	CID003709	Abazhou Gaoyuan Lithium Electric Material Co., Ltd.	CHINA	-	-	-
514	Lithium (Li)	CID003710	General Lithium Corporation	CHINA	-	-	-
515	Lithium (Li)	CID003711	Guizhou Redstar Development Dalong Manganese Industry Co., Ltd.	CHINA	-	-	-
516	Lithium (Li)	CID003712	Guizhou Red Star Electronic Material Co., Ltd.	CHINA	Conformant	-	-
517	Lithium (Li)	CID003713	Hunan Wuchuang Recycling Technology Co., Ltd.	CHINA	-	-	-
518	Lithium (Li)	CID003714	Jiangxi Ganfeng Lithium Co., Ltd.	CHINA	Conformant	-	-
519	Lithium (Li)	CID003715	Ningdu Ganfeng Lithium Co., Ltd.	CHINA	Conformant	-	-
520	Lithium (Li)	CID003717	Sichuan Zhiyuan Lithium Industries Co., Ltd.	CHINA	-	-	-
521	Lithium (Li)	CID003720	Tianqi Lithium (Shehong) Co., Ltd.	CHINA	-	-	-
522	Lithium (Li)	CID003745	POSCO	KOREA, REPUBLIC OF	-	-	-
523	Lithium (Li)	CID003759	Kemerton Lithium Hydroxide Plant	AUSTRALIA	-	-	-
524	Lithium (Li)	CID003950	Qinghai Jinaier Lithium Resources Co., Ltd.	CHINA	-	-	-
525	Lithium (Li)	CID003954	SQM Salar S.A. (Planta Quimica Lítio Carmen)	CHILE	Active	-	-
526	Lithium (Li)	CID004013	Jingmen GEM Co., Ltd.	CHINA	-	-	-
527	Lithium (Li)	CID004014	Jiangxi Nanshi Lithium Power New Materials Co., Ltd.	CHINA	-	-	-
528	Lithium (Li)	CID004015	ChiZhou CN New Materials and Technology Co., Ltd.	CHINA	-	-	-
529	Lithium (Li)	CID004021	Sichuan Siterui Lithium Industry Co., Ltd.	CHINA	-	-	-
530	Lithium (Li)	CID004022	Ganzhou Miracle Lithium Industrial Co., Ltd.	CHINA	-	-	-
531	Lithium (Li)	CID004023	Hunan Brung Recycling Technology Co., Ltd.	CHINA	Conformant	-	-
532	Lithium (Li)	CID004038	Tyeeli (Yibin) Co., Ltd.	CHINA	Conformant	-	-
533	Lithium (Li)	CID004063	Longnan Ruihong Technology Co., Ltd.	CHINA	-	-	-
534	Lithium (Li)	CID004064	Quannan Ruilong Technology Co., Ltd.	CHINA	-	-	-

No	Metal	ID	Smelter Name	Location	RMAP Status	Direct Sourcing	Indirect Supplying Smelter Sourcing
535	Lithium (Li)	CID004066	Zhejiang New Era Zhongneng Technology Co., Ltd.	CHINA	-	-	-
536	Lithium (Li)	CID004439	Jiangxi Ruida New Energy Technology Co., Ltd.	CHINA	Conformant	-	-
537	Lithium (Li)	CID004494	Xinyu Lithium Hydroxide Plant	CHINA	Active	-	-
538	Lithium (Li)	CID004495	Kings Mountain Lithium Hydroxide Plant	U.S.A	-	-	-
539	Lithium (Li)	CID004544	La Negra Lithium Carbonate Plant	CHILE	-	-	-
540	Lithium (Li)	CID004558	Yahua Lithium Industry (Ya'an) Co., Ltd.	CHINA	Conformant	-	-
541	Lithium (Li)	CID004602	Greenbushes Lithium Operation	AUSTRALIA	-	-	-
542	Lithium (Li)	CID004615	Qinzhou Lithium Hydroxide Plant	CHINA	-	-	-
543	Lithium (Li)	CID004696	Attero Recycling Pvt Ltd	INDIA	-	-	-
544	Lithium (Li)	CID004721	Tyeeli (Meishan) Co., Ltd.	CHINA	Conformant	-	-
545	Lithium (Li)	CID004722	Chengdu Youngy Lithium Technology Co., Ltd	CHINA	-	-	-
546	Lithium (Li)	CID004723	Suining Chengxi Lithium Industries Inc.	CHINA	-	-	-
547	Lithium (Li)	CID004726	Hunan Yongshan Lithium Co., Ltd.	CHINA	Conformant	-	-
548	Lithium (Li)	CID004747	Arcadium Lithium (Fenix)	ARGENTINA	Conformant	-	-
549	Lithium (Li)	CID004749	Arcadium Lithium (Bessemer City)	U.S.A	Conformant	-	-
550	Lithium (Li)	CID004751	Jiangsu Baozong & Baoda Pharmachem Co. Ltd.	CHINA	Conformant	-	-
551	Lithium (Li)	CID005007	Albemarle Sichuan New Material Co. Ltd. (Meishan)	CHINA	-	-	-
552	Lithium (Li)	CID005008	Albemarle - Langelsheim Site	GERMANY	-	-	-
553	Lithium (Li)	CID005009	Albemarle - Silver Peak Site	U.S.A	-	-	-
554	Lithium (Li)	CID005184	Minera Exar S.A.	ARGENTINA	Active	-	-
555	Lithium (Li)	CID005201	Wodgina Lithium Mine	AUSTRALIA	-	-	-
556	Lithium (Li)	CID005222	PT. ChengTok Lithium Indonesia	INDONESIA	Active	-	-
557	Lithium (Li)	CID005266	Lianhe Chemical Technology(Linhai) Co.,Ltd	CHINA	Conformant	-	-
558	Mica	CID003512	Yamaguchi Mica	JAPAN	Conformant	-	-
559	Mica	CID003513	Modi Mica Enterprises	INDIA	-	-	-
560	Mica	CID003589	Imerys Canada, Inc.	CANADA	-	-	-
561	Mica	CID003590	Southeastern Performance Minerals, LLC	U.S.A	-	-	-
562	Mica	CID003591	Imerys Mica Kings Mountain, Inc.	U.S.A	-	-	-
563	Mica	CID003592	Arctic Minerals, LLC	U.S.A	-	-	-
564	Mica	CID003593	VON ROLL BRAZIL LTDA	BRAZIL	-	-	-
565	Mica	CID003595	Shijiazhuang ShuoZhan Mineral Products Co. LTD.	CHINA	-	-	-
566	Mica	CID003599	Pachisia & Co.	INDIA	-	-	-

No	Metal	ID	Smelter Name	Location	RMAP Status	Direct Sourcing	Indirect Supplying Smelter Sourcing
567	Mica	CID003621	DARUKA INTERNATIONAL	INDIA	-	-	-
568	Mica	CID003623	G. K. INTERNATIONAL	INDIA	-	-	-
569	Mica	CID003624	LAXIM MINERALS CORPORATION	INDIA	-	-	-
570	Mica	CID003626	DARUKA MINERALS	INDIA	-	-	-
571	Mica	CID003629	SUBLIME MICA EXPORTS	INDIA	-	-	-
572	Mica	CID003645	Shree GR Exports	INDIA	-	-	-
573	Mica	CID003647	Kritika Enterprises	INDIA	-	-	-
574	Mica	CID003648	Pravin Mica	INDIA	-	-	-
575	Mica	CID003654	Vei Mica Products	INDIA	-	-	-
576	Mica	CID003664	JSC "Sludyanaya Fabrika"	RUSSIA	-	-	-
577	Mica	CID003730	Lingshou Huajing Mica Co., Ltd.	CHINA	-	-	-
578	Mica	CID003734	Tri-H	MADAGASCAR	-	-	-
579	Mica	CID003783	Ratan Mica Exports Pvt. Ltd	INDIA	-	-	-
580	Mica	CID003787	Nanjing Jinyun Mica Ltd.	CHINA	-	-	-
581	Mica	CID003970	Yamaguchi Mica Co., Ltd. Toyohashi Factory	JAPAN	Conformant	-	-
582	Mica	CID003971	Yamaguchi Mica Co., Ltd. Shinshiro Factory	JAPAN	Conformant	-	-
583	Mica	CID003979	HEBEI LINGSHOU COUNTY ZHONGKE MINERAL POWDER CO., LTD.	CHINA	-	-	-
584	Mica	CID003980	Hunan Rongtai New Material Co., Ltd.	CHINA	Active	-	-
585	Mica	CID003985	Minerals i Derivats, S.A.	SPAIN	-	-	-
586	Mica	CID003987	Mica Electrical Material (Luhe) Co., Ltd.	CHINA	Conformant	-	-
587	Mica	CID004001	DARUKA MINCHEM PVT.LTD	INDIA	-	-	-
588	Mica	CID004067	The Jai Mica Supply Co., PVT Ltd.	INDIA	-	-	-
589	Mica	CID004401	Goode EIS (Suzhou) Corp., Ltd.	CHINA	Conformant	-	-
590	Mica	CID004402	Kehui Mica Co., Ltd.	CHINA	-	-	-
591	Mica	CID004623	LKAB Minerals Oy	FINLAND	Conformant	-	-
592	Mica	CID004743	MK Import Export	MADAGASCAR	-	-	-
593	Mica	CID004744	Super Market Fort Dauphin	MADAGASCAR	-	-	-
594	Mica	CID004799	Baotou Fuguang Trading Co., Ltd. Guyang Branch	CHINA	-	-	-
595	Mica	CID004805	Caolines de Vimianzo, SAU (aka CAVISA)	SPAIN	-	-	-
596	Nickel (Ni)	CID003703	Eramet SLN	NEW CALEDONIA	-	-	-
597	Nickel (Ni)	CID003707	Angel Nickel	INDONESIA	-	-	-
598	Nickel (Ni)	CID003753	Atlantic Nickel Santa Rita	BRAZIL	-	-	-
599	Nickel (Ni)	CID003771	JIANGMEN UMICORE CHANG XIN NEW MATERIALS CO., LTD,	CHINA	-	-	-
600	Nickel (Ni)	CID003775	Apex Material Technologies	U.S.A	-	-	-

No	Metal	ID	Smelter Name	Location	RMAP Status	Direct Sourcing	Indirect Supplying Smelter Sourcing
601	Nickel (Ni)	CID003791	Ramu Nickel Mine	DRC	-	-	-
602	Nickel (Ni)	CID003799	Ege Kimya	TURKEY	-	-	-
603	Nickel (Ni)	CID003882	Harima Refinery	JAPAN	Conformant	-	-
604	Nickel (Ni)	CID003883	Isoura Plant	JAPAN	-	-	-
605	Nickel (Ni)	CID003886	Hyuga Smelting Co., Ltd.	JAPAN	-	-	-
606	Nickel (Ni)	CID003897	Sumiko Energy Materials Co., Ltd.	JAPAN	-	-	-
607	Nickel (Ni)	CID003923	Jiangmen Fangyuan Cycle Technology Co., Ltd.	CHINA	-	-	-
608	Nickel (Ni)	CID003925	Jiangmen Fangyuan New Energy Materials Co., Ltd.	CHINA	-	-	-
609	Nickel (Ni)	CID003928	Minara Resources Pty	AUSTRALIA	Conformant	-	-
610	Nickel (Ni)	CID003943	Guangdong Fangyuan New Materials Group Co., Ltd.	CHINA	-	-	-
611	Nickel (Ni)	CID003947	Baotou Jielang Nickel Salt Co., Ltd.	CHINA	-	-	-
612	Nickel (Ni)	CID003953	Yibin Guangyuan Lithium Battery Material Co., Ltd.	CHINA	-	-	-
613	Nickel (Ni)	CID003957	Cronimet Specialty Metals	U.S.A	-	-	-
614	Nickel (Ni)	CID003958	Joint-Stock Company Kola Mining and Metallurgical Company (JSC Kola MMC)	RUSSIA	-	-	-
615	Nickel (Ni)	CID003968	Dynatec Madagascar Company	MADAGASCAR	Conformant	-	-
616	Nickel (Ni)	CID003975	Hunan Brunp Recycling Technology Co., Ltd.	CHINA	Conformant	-	-
617	Nickel (Ni)	CID003976	Jinchuan Group Co., Ltd.	CHINA	-	-	-
618	Nickel (Ni)	CID004004	PT HUAYUE NICKEL COBALT	INDONESIA	Conformant	-	-
619	Nickel (Ni)	CID004005	PT Smelter Nickel Indonesia	INDONESIA	-	-	-
620	Nickel (Ni)	CID004006	PT Cahaya Modern Metal Industri	INDONESIA	-	-	-
621	Nickel (Ni)	CID004007	PT Aneka Tambang Tbk (Antam)	INDONESIA	-	-	-
622	Nickel (Ni)	CID004008	Norilsk Harjavalta	FINLAND	Conformant	-	-
623	Nickel (Ni)	CID004012	Nadezhda Metallurgical Plant of MMC Norilsk Nickel's Polar Division	RUSSIA	-	-	-
624	Nickel (Ni)	CID004024	Zhejiang Power New Energy Materials Co., Ltd.	CHINA	-	-	-
625	Nickel (Ni)	CID004055	Niihama Nickel Refinery	JAPAN	Conformant	-	-
626	Nickel (Ni)	CID004395	Guangxi Yinyi Advanced Material Co., Ltd.	CHINA	Conformant	-	-
627	Nickel (Ni)	CID004398	Jiangxi Miracle Golden Tiger Cobalt Co. Ltd.	CHINA	Conformant	-	-
628	Nickel (Ni)	CID004432	Guizhou Red Star Electronic Material Co., Ltd.	CHINA	-	-	-
629	Nickel (Ni)	CID004444	Nickel West - Kwinana	AUSTRALIA	-	-	-
630	Nickel (Ni)	CID004445	Ravensthorpe Nickel Operation (RNO)	AUSTRALIA	-	-	-
631	Nickel (Ni)	CID004446	First Quantum Minerals Ltd.	AUSTRALIA	-	-	-

No	Metal	ID	Smelter Name	Location	RMAP Status	Direct Sourcing	Indirect Supplying Smelter Sourcing
632	Nickel (Ni)	CID004447	Broken Hill Proprietary Billiton Ltd. (BHP)	AUSTRALIA	-	-	-
633	Nickel (Ni)	CID004448	Mcc Ramu Nickel & Cobalt Co., Ltd.	PAPUA NEW GUINEA	-	-	-
634	Nickel (Ni)	CID004449	Fort Saskatchewan Metals Facility	CANADA	-	-	-
635	Nickel (Ni)	CID004450	Chizhou CN New Materials and Technology Co., Ltd.	CHINA	-	-	-
636	Nickel (Ni)	CID004451	Shanxi Jutai New Material Technology Co., Ltd.	CHINA	-	-	-
637	Nickel (Ni)	CID004452	Xiangtan Electrochemical Scientific Ltd.	CHINA	-	-	-
638	Nickel (Ni)	CID004453	PT Halmahera Persada Lygend	INDONESIA	Conformant	-	-
639	Nickel (Ni)	CID004454	PT Indonesia Guang Ching Nickel Stainless Steel Industry	INDONESIA	-	-	-
640	Nickel (Ni)	CID004493	Ecopro Materials Co., Ltd.	KOREA, REPUBLIC OF	Active	-	-
641	Nickel (Ni)	CID004500	Boliden Harjavalta Oy	FINLAND	-	-	-
642	Nickel (Ni)	CID004509	CoreMax Corporation	TAIWAN	-	-	-
643	Nickel (Ni)	CID004510	Zhejiang Huayou Cobalt Company Limited	CHINA	-	-	-
644	Nickel (Ni)	CID004512	Jingmen GEM Co., Ltd. (GEMCO)	CHINA	-	-	-
645	Nickel (Ni)	CID004513	Korea Energy Materials Corp (KEMCO)	KOREA, REPUBLIC OF	Active	-	-
646	Nickel (Ni)	CID004514	Mechema	TAIWAN	-	-	-
647	Nickel (Ni)	CID004516	Petro China	CHINA	-	-	-
648	Nickel (Ni)	CID004517	Shangrao Zhiyuan	CHINA	-	-	-
649	Nickel (Ni)	CID004520	Spring Refinery	SOUTH AFRICA	-	-	-
650	Nickel (Ni)	CID004521	Umicore Belgium	BELGIUM	-	-	-
651	Nickel (Ni)	CID004522	Zenith Chemicals	TAIWAN	-	-	-
652	Nickel (Ni)	CID004525	Ganzhou Tengyuan Cobalt New Material Co., Ltd.	CHINA	-	-	-
653	Nickel (Ni)	CID004526	Guangdong Jiana Energy Technology Co., Ltd.	CHINA	-	-	-
654	Nickel (Ni)	CID004528	Lanzhou Jinchuan Advanced Materials Technology Co., Ltd.	CHINA	-	-	-
655	Nickel (Ni)	CID004530	Tianjin Maolian Science & Technology Co., Ltd.	CHINA	-	-	-
656	Nickel (Ni)	CID004531	Xinxiang Jien New Energy Materials Co., Ltd.	CHINA	-	-	-
657	Nickel (Ni)	CID004532	PT Zhongtsing New Energy	INDONESIA	Conformant	-	-
658	Nickel (Ni)	CID004562	Hongqiling Plant / Jien Nickel smelter	CHINA	-	-	-
659	Nickel (Ni)	CID004563	Jinzhou Plant	CHINA	-	-	-
660	Nickel (Ni)	CID004564	Ningbo Changjiang Energy Technology Co., Ltd.	CHINA	-	-	-

No	Metal	ID	Smelter Name	Location	RMAP Status	Direct Sourcing	Indirect Supplying Smelter Sourcing
661	Nickel (Ni)	CID004565	Jiangxi Rui Feng Environmental Protection Co., Ltd.	CHINA	-	-	-
662	Nickel (Ni)	CID004566	Jiangxi Rui da Xinnengyuan Technology Co., Ltd.	CHINA	Conformant	-	-
663	Nickel (Ni)	CID004567	Henan Kelong New Energy Co., Ltd.	CHINA	-	-	-
664	Nickel (Ni)	CID004568	Zhejiang New Times Zhongneng Cycle Technology Co., Ltd.	CHINA	-	-	-
665	Nickel (Ni)	CID004569	Qidong Beixin Inorganic Chemical Co., Ltd.	CHINA	-	-	-
666	Nickel (Ni)	CID004570	Guangdong Jinsheng New Energy Co., Ltd.	CHINA	-	-	-
667	Nickel (Ni)	CID004571	Talvivaara	FINLAND	-	-	-
668	Nickel (Ni)	CID004575	Coral Bay Nickel Corporation (CBNC)	PHILIPPINES	-	-	-
669	Nickel (Ni)	CID004576	Thakadu Nickel Sulphate Plant	SOUTH AFRICA	-	-	-
670	Nickel (Ni)	CID004577	Marikana, Rustenburg	SOUTH AFRICA	-	-	-
671	Nickel (Ni)	CID004578	Bindura Smelter and Refinery	ZIMBABWE	-	-	-
672	Nickel (Ni)	CID004579	PT QMB New Energy Materials	INDONESIA	Conformant	-	-
673	Nickel (Ni)	CID004581	PT LPH 2	INDONESIA	-	-	-
674	Nickel (Ni)	CID004606	Impala Platinum - Base Metal Refinery (BMR)	SOUTH AFRICA	Conformant	-	-
675	Nickel (Ni)	CID004612	Impala Platinum - Rustenburg Smelter	SOUTH AFRICA	Conformant	-	-
676	Nickel (Ni)	CID004618	IconiChem	UNITED KINGDOM	Conformant	-	-
677	Nickel (Ni)	CID004693	PT DEBONAIR NICKEL INDONESIA	INDONESIA	Conformant	-	-
678	Nickel (Ni)	CID004698	Attero Recycling Pvt Ltd	INDIA	-	-	-
679	Nickel (Ni)	CID004703	Ascend Elements, Inc. (Appex)	U.S.A	-	-	-
680	Nickel (Ni)	CID004708	Jiangmen Chancsun Umicore Industry Co., Ltd. (JUC)	CHINA	Conformant	-	-
681	Nickel (Ni)	CID004728	Guangxi CNGR New Energy Science & Technology Co., Ltd.	CHINA	Conformant	-	-
682	Nickel (Ni)	CID004757	Nickel Industries Limited	AUSTRALIA	-	-	-
683	Nickel (Ni)	CID004758	Hengjaya Nickel	INDONESIA	-	-	-
684	Nickel (Ni)	CID004759	Ranger Nickel	INDONESIA	-	-	-
685	Nickel (Ni)	CID004761	Oracle Nickel	INDONESIA	-	-	-
686	Nickel (Ni)	CID004762	Hengjaya Mine	INDONESIA	-	-	-
687	Nickel (Ni)	CID004801	Prony Resources New Caledonia	NEW CALEDONIA	-	-	-
688	Nickel (Ni)	CID004803	PT Trimegah Bangun (TBP)	INDONESIA	-	-	-
689	Nickel (Ni)	CID004804	PT Gane Permai Sentosa (GPS)	INDONESIA	-	-	-
690	Nickel (Ni)	CID005026	Innovative Circuits Inc.	U.S.A	-	-	-
691	Nickel (Ni)	CID005057	PT Bumi Mineral Sulawesi	INDONESIA	-	-	-

No	Metal	ID	Smelter Name	Location	RMAP Status	Direct Sourcing	Indirect Supplying Smelter Sourcing
692	Nickel (Ni)	CID005061	Guizhou CNGR Resource Recycling Industry Development Co., Ltd.	CHINA	Conformant	-	-
693	Nickel (Ni)	CID005065	PT Cngr Ding Xing New Energy	INDONESIA	-	-	-
694	Nickel (Ni)	CID005175	Hunan CNGR New Energy Science & Technology Co., Ltd.	CHINA	Conformant	-	-
695	Nickel (Ni)	CID005214	PT HUAFEI NICKEL COBALT	INDONESIA	Conformant	-	-
696	Nickel (Ni)	CID005220	LOHUM CLEANTECH PVT LTD	INDIA	-	-	-
697	Nickel (Ni)	CID005225	Taganito HPAL Nickel Corp.	PHILIPPINES	-	-	-
698	Nickel (Ni)	CID005237	Fujian Evergreen New Energy Technology Co.	CHINA	Active	-	-
699	Nickel (Ni)	CID005241	PT. Infei Metal Industry	INDONESIA	Conformant	-	-
700	Nickel (Ni)	CID005242	PT. Westrong Metal Industry	INDONESIA	Conformant	-	-
701	Nickel (Ni)	CID005247	PT Obi Nickel Cobalt	INDONESIA	Conformant	-	-
702	Nickel (Ni)	CID005249	Umicore Olen	BELGIUM	Conformant	-	-
703	Nickel (Ni)	CID005250	Umicore Finland Oy	FINLAND	Active	-	-
704	Nickel (Ni)	CID005252	PT.NADESICO NICKEL INDUSTRY	INDONESIA	Conformant	-	-
705	Nickel (Ni)	CID005320	Wanhua Chemical Hydrometallurgy Unit	CHINA	-	-	-
706	Nickel (Ni)	CID005328	Zimbabwe Platinum Mines Private Limited	ZIMBABWE	Active	-	-
707	Nickel (Ni)	CID005342	Huayou New Energy Technology (Quzhou) Co., Ltd.	CHINA	-	-	-
708	Nickel (Ni)	CID005353	Fairisky Industrial Co., Limited	CHINA	-	-	-
709	Nickel (Ni)	CID005360	COBCO S.A.	MOROCCO	-	-	-



Select Language Preference Here:
 請選擇您的語言:
 삼성물산 언어를 선택하십시오:
 表示言語をここから選択してください:
 Sélectionner la langue préférée ici:
 Wählen sie hier die Sprache:

English

Additional Minerals Reporting Template (AMRT)

Revision 1.3
 October 17, 2025

The purpose of this document is to collect sourcing information on minerals/metals used in products.

Mandatory fields are noted with an asterisk (*). Consult the instructions tab for guidance on how to answer each question.

Company Information

Company Name (*):	Samsung Electronics				
Declaration Scope or Class (*):	A. Company				
Description of Scope:					
Select Minerals/Metals in Scope (up to a maximum of 10)(*): This Declaration can include up to 10 minerals or metals. If mineral or metal doesn't appear on the list, select "Other".	Aluminum	Other [specify below]	Iridium	Silver	Other [specify below]
Note: The minerals entered here are reflected in questions 1-2 and will be sorted in alphabetical order. Please ensure that the answers match the intended minerals.	Zinc				
		Chromium			Iron/Steel
If you selected "Other" in previous question, please specify which other minerals/metals are in scope:					
Company Unique ID:	687967554				
Company Unique ID Authority:	DUNS				
Address:	129 Samseong-ro, Yeongtong-gu, Suwon, Korea #16677				
Contact Name (*):	Samsung Electronics Conflict Minerals Manager				
Email - Contact (*):	purchasingcm@samsung.com				
Phone - Contact (*):	+82-2-2255-0114				
Title - Authorizer (*):	Samsung Electronics Conflict Minerals Manager				
Email - Authorizer (*):	purchasingcm@samsung.com				
Phone - Authorizer:					
Effective Date (*):	1-Jan-2026				

Answer the following questions 1 - 2 based on the declaration scope indicated above

1) Is any of the following minerals or metals intentionally added or used in the product(s) or in the production process? (*)

	Answer	Comments
Aluminum(*)	Yes	
Chromium(*)	Yes	
Iridium(*)	Yes	
Iron/Steel(*)	Yes	
Silver(*)	Yes	
Zinc(*)	Yes	

2) What percentage of relevant suppliers have provided a response to your supply chain survey?

	Answer	Comments
Aluminum	Greater than 90%	
Chromium	Greater than 90%	
Iridium	Greater than 90%	
Iron/Steel	Greater than 90%	
Silver	Greater than 90%	
Zinc	Greater than 90%	

AMRT Smelter List : Aluminum, Chromium, Indium, Silver, Iron/Steel, Zinc

No	Metal	ID	Smelter Name	Location	RMAP Status
1	Aluminum (Al)	CID003669	Fujhara Refinery	U.A.E	-
2	Aluminum (Al)	CID003684	Shanghai Zhiye Industry Co., Ltd.	CHINA	-
3	Aluminum (Al)	CID003904	Capral Aluminium (Penrith)	AUSTRALIA	-
4	Aluminum (Al)	CID003905	Capral Aluminium (Smithfield)	AUSTRALIA	-
5	Aluminum (Al)	CID004627	Ahresty Corporation (Kumagaya plant)	JAPAN	-
6	Aluminum (Al)	CID004628	Allied Metal Co	U.S.A	-
7	Aluminum (Al)	CID004629	Aluminerie Alouette Inc.	CANADA	-
8	Aluminum (Al)	CID004630	Aluminio La Estrella, S.L.U.	SPAIN	-
9	Aluminum (Al)	CID004631	Aluminium Bahrain BSC (c)	BAHRAIN	-
10	Aluminum (Al)	CID004632	ALUMINIUM DUNKERQUE	FRANCE	-
11	Aluminum (Al)	CID004633	Alusigma S.A.	SPAIN	-
12	Aluminum (Al)	CID004634	Alvance British Aluminium Ltd. (Lochaber)	UNITED KINGDOM	-
13	Aluminum (Al)	CID004635	Audubon Metals LLC	U.S.A	-
14	Aluminum (Al)	CID004636	Befesa Aluminio, S.L. (Erandio)	SPAIN	-
15	Aluminum (Al)	CID004637	Befesa Aluminio, S.L. (Les Franqueses)	SPAIN	-
16	Aluminum (Al)	CID004638	Bermco Aluminum	U.S.A	-
17	Aluminum (Al)	CID004639	Century Aluminium Company (Grundartangi)	ICELAND	-
18	Aluminum (Al)	CID004640	Chang Chyi Aluminum Co., Ltd.	TAIWAN	-
19	Aluminum (Al)	CID004641	Coleshill Aluminium Ltd	UNITED KINGDOM	-
20	Aluminum (Al)	CID004642	Companhia Brasileira de Aluminio	BRAZIL	-
21	Aluminum (Al)	CID004643	Custom Alloy Light Metals, Inc.	U.S.A	-
22	Aluminum (Al)	CID004644	FECS Partecipazioni S.r.l	ITALY	-
23	Aluminum (Al)	CID004645	Intals S.p.A.	ITALY	-
24	Aluminum (Al)	CID004646	JBM International Ltd	INDIA	-
25	Aluminum (Al)	CID004647	KuU.S.Akoski Oy	FINLAND	-
26	Aluminum (Al)	CID004648	Mil-Ver Metal Co Ltd	UNITED KINGDOM	-
27	Aluminum (Al)	CID004649	Mytilineos S.A. (Aluminium Of Greece Plant)	GREECE	-
28	Aluminum (Al)	CID004650	Oetinger Aluminium NU GmbH	GERMANY	-
29	Aluminum (Al)	CID004651	Owl's Head Alloys Inc	U.S.A	-
30	Aluminum (Al)	CID004652	P.T. H.P. Metals Indonesia	INDONESIA	-
31	Aluminum (Al)	CID004653	Permtsvetmet JSC	RUSSIA	-
32	Aluminum (Al)	CID004654	PT Indonesia Asahan Aluminium (Persero)	INDONESIA	-
33	Aluminum (Al)	CID004655	Real Alloy LLC (REAL ALLOY (GERMANY) GBMH)	GERMANY	-
34	Aluminum (Al)	CID004656	Real Alloy LLC (REAL ALLOY MEXICO S. DE R.L. DE C.V.)	MEXICO	-
35	Aluminum (Al)	CID004657	Real Alloy LLC (REAL ALLOY CANADA LTD.)	CANADA	-
36	Aluminum (Al)	CID004658	Real Alloy LLC (REAL ALLOY SPECIFICATION, LLC)	U.S.A	-
37	Aluminum (Al)	CID004659	Refinal Industries SA	FRANCE	-
38	Aluminum (Al)	CID004660	Refineria De Aluminio S.L	SPAIN	-
39	Aluminum (Al)	CID004661	S.C. Alro S.A.	ROMANIA	-

No	Metal	ID	Smelter Name	Location	RMAP Status
40	Aluminum (Al)	CID004662	S.C. Alro S.A. (ALRO SMELTER)	ROMANIA	-
41	Aluminum (Al)	CID004663	Sacal Societa Alluminio Carisio S.p.A.	ITALY	-
42	Aluminum (Al)	CID004664	SEAL & Co., Ltd	RUSSIA	-
43	Aluminum (Al)	CID004665	Sigma Brothers Inc.	U.S.A	-
44	Aluminum (Al)	CID004666	Spectro Alloys Corp.	U.S.A	-
45	Aluminum (Al)	CID004667	Spectro Alloys Corp. (STENA ALUMINIUM AB)	SWEDEN	-
46	Aluminum (Al)	CID004668	Spectro Alloys Corp. (STATE METAL INDUSTRIES INC.)	U.S.A	-
47	Aluminum (Al)	CID004669	Sun Metal Industries Ltd	PAKISTAN	-
48	Aluminum (Al)	CID004670	TST Inc. (Timco)	U.S.A	-
49	Aluminum (Al)	CID004671	United Company RU.S.AL Plc (NOVOKUZNETSK ALUMINIUM SMELTER)	RUSSIA	-
50	Aluminum (Al)	CID004672	United Company RU.S.AL Plc (JSC BOGUCHANY ALUMINIUM SMELTER)	RUSSIA	-
51	Aluminum (Al)	CID004673	United Company RU.S.AL Plc (SAYANOGORSK ALUMINIUM SMELTER)	RUSSIA	-
52	Aluminum (Al)	CID004674	United Company RU.S.AL Plc (BRATSK ALUMINIUM SMELTER (SHELEKHOV))	RUSSIA	-
53	Aluminum (Al)	CID004675	United Company RU.S.AL Plc (BRATSK ALUMINIUM SMELTER)	RUSSIA	-
54	Aluminum (Al)	CID004676	United Company RU.S.AL Plc (KRASNOYARSK ALUMINIUM SMELTER)	RUSSIA	-
55	Aluminum (Al)	CID004677	United Company RU.S.AL Plc (KANDALAKSHA ALUMINIUM SMELTER)	RUSSIA	-
56	Aluminum (Al)	CID004678	United Company RU.S.AL Plc (Volgograd Aluminium Smelter)	RUSSIA	-
57	Aluminum (Al)	CID004679	United Company RU.S.AL Plc	RUSSIA	-
58	Aluminum (Al)	CID004680	Ye Chiu Metal Smelting Sdn. Bhd. (YE CHIU METAL RECYCLING (CHINA) LTD.)	MALAYSIA	-
59	Aluminum (Al)	CID004699	Attero Recycling Pvt Ltd	INDIA	-
60	Aluminum (Al)	CID004815	Hindalco Industries Ltd - Aditya Aluminum Smelter	INDIA	-
61	Aluminum (Al)	CID004816	Hindalco Industries Ltd - Mahan Smelter	INDIA	-
62	Aluminum (Al)	CID004817	Hindalco Industries Ltd - Renukoot Complex Smelter	INDIA	-
63	Aluminum (Al)	CID004818	Hindalco Industries Ltd - Hirakud Smelter	INDIA	-
64	Aluminum (Al)	CID004820	VinFast Trading and Production Joint Stock Company	VIET NAM	-
65	Aluminum (Al)	CID005010	Sunardi	INDONESIA	-
66	Aluminum (Al)	CID005023	Wu Xi Fortune Technology Co.Ltd	CHINA	-
67	Aluminum (Al)	CID005034	Contract Solutions Scotland Limited	UNITED KINGDOM	-
68	Aluminum (Al)	CID005226	Green Posture, Lda	PORTUGAL	-
69	Chromium (Cr)	CID003848	Outokumpu Tornio Ferrochrome Operations	FINLAND	-
70	Chromium (Cr)	CID003849	Outokumpu Kemi Mine	FINLAND	-
71	Chromium (Cr)	CID003850	Outokumpu Avesta Operations	SWEDEN	-
72	Chromium (Cr)	CID003851	Outokumpu Dahlebruck Operations and Sales	GERMANY	-
73	Chromium (Cr)	CID003852	Outokumpu Mexinox S.A. de C.V.	MEXICO	-
74	Chromium (Cr)	CID003853	Outokumpu Dillenburg Operations and Sales	GERMANY	-
75	Chromium (Cr)	CID003854	Outokumpu Krefeld Operations and Sales	GERMANY	-

No	Metal	ID	Smelter Name	Location	RMAP Status
76	Chromium (Cr)	CID003855	Outokumpu Storfors Operations	SWEDEN	-
77	Chromium (Cr)	CID003856	Outokumpu Degerfors Operations	SWEDEN	-
78	Chromium (Cr)	CID003857	Outokumpu Degerfors Operations for Long products	SWEDEN	-
79	Chromium (Cr)	CID003858	Outokumpu Nyby Operations	SWEDEN	-
80	Chromium (Cr)	CID003859	Outokumpu Press Plate AB	SWEDEN	-
81	Chromium (Cr)	CID003860	Outokumpu Stainless B.V.	NETHERLANDS	-
82	Chromium (Cr)	CID003861	Outokumpu Stainless Ltd.	UNITED KINGDOM	-
83	Chromium (Cr)	CID003862	Outokumpu Stainless U.S.A, LLC	U.S.A	-
84	Chromium (Cr)	CID003863	Outokumpu Stainless Bar, LCC	U.S.A	-
85	Chromium (Cr)	CID003864	Outokumpu	FINLAND	-
86	Indium (In)	CID003815	Young Poong Sukpo Smelter	KOREA, REPUBLIC OF	-
87	Silver (Ag)	CID003810	Hindustan Platinum Pvt. Ltd.	INDIA	-
88	Silver (Ag)	CID003880	Toyo Smelter & Refinery	JAPAN	-
89	Silver (Ag)	CID003893	Ohkuchi Electronics Co., Ltd.	JAPAN	-
90	Silver (Ag)	CID003999	JX Nippon Mining & Metals Co., Ltd.	JAPAN	-
91	Silver (Ag)	CID004020	Empresa Minera Manquiri S.A.	BOLIVIA	Conformant
92	Silver (Ag)	CID004586	Boliden Ronnskar	SWEDEN	-
93	Silver (Ag)	CID004605	Impala Platinum - Base Metal Refinery (BMR)	SOUTH AFRICA	Conformant
94	Silver (Ag)	CID004611	Impala Platinum - Rustenburg Smelter	SOUTH AFRICA	Conformant
95	Silver (Ag)	CID004700	Attero Recycling Pvt Ltd	INDIA	-
96	Silver (Ag)	CID004730	LS MnM Inc.	KOREA, REPUBLIC OF	-
97	Silver (Ag)	CID004809	SAAMP	FRANCE	-
98	Silver (Ag)	CID005183	Impala Platinum - Platinum Metals Refinery (PMR)	SOUTH AFRICA	Conformant
99	Silver (Ag)	CID005223	SAM Precious Metals FZ-LLC	U.A.E	-
100	Silver (Ag)	CID005290	Young Poong Seokpo Smelter	KOREA, REPUBLIC OF	-
101	Silver (Ag)	CID005327	Zimbabwe Platinum Mines Private Limited	ZIMBABWE	Active
102	Silver (Ag)	CID005390	Carrizal Mining S.A. de C.V.	MEXICO	-
103	Silver (Ag)	CID005400	KGHM Polska Miedz S.A. Oddzial Huta Miedzi, Glogow	POLAND	-
104	Iron/Steel	CID003756	Wonmunna	AUSTRALIA	-
105	Iron/Steel	CID003885	Hyuga Smelting Co., Ltd.	JAPAN	-
106	Iron/Steel	CID003890	Sumiko Kunitomi Electronics Co., Ltd.	JAPAN	-
107	Iron/Steel	CID004002	ArcelorMittal Mining	CANADA	-
108	Iron/Steel	CID005011	Sunardi	INDONESIA	-
109	Iron/Steel	CID005022	Wu Xi Fortune Technology Co.Ltd	CHINA	-
110	Iron/Steel	CID005036	Contract Solutions Scotland Limited	UNITED KINGDOM	-
111	Zinc (Zn)	CID003800	Ege Kimya	TURKEY	-
112	Zinc (Zn)	CID003806	Societe pour le Traitment du Terril de Lubumbashi (STL)	DRC	Conformant
113	Zinc (Zn)	CID003884	Shisaka Smelting Co., Ltd.	JAPAN	-

No	Metal	ID	Smelter Name	Location	RMAP Status
114	Zinc (Zn)	CID003930	MCC Non Ferrous Trading Inc.	U.S.A	-
115	Zinc (Zn)	CID004059	Eti Bakir A.S	TURKEY	Conformant
116	Zinc (Zn)	CID004501	Boliden Kokkola	FINLAND	-
117	Zinc (Zn)	CID004502	Boliden Odda	NORWAY	-
118	Zinc (Zn)	CID005173	Cameron ply	U.S.A	-
119	Zinc (Zn)	CID005199	Balikesir Balya Lead & Zinc Mine	TURKEY	Active
120	Zinc (Zn)	CID005224	Young Poong Sukpo Smelter	KOREA, REPUBLIC OF	Active
121	Zinc (Zn)	CID005245	Korea Zinc Co., Ltd.	KOREA, REPUBLIC OF	-

* Data Key

CC	Covered countries are the 9 countries adjoining the Democratic Republic of Congo.
DRC	Congo (Democratic Republic of the)
Low Risk (LR)	Countries identified by smelters and refiners as low-risk. Those marked with an ** have been disclosed by some smelters to be low-risk but disclosed by other smelters to be high-risk.
High Risk (HR)	Countries identified by smelters and refiners as Conflict-Affected and High-Risk (HR). Those marked with an ** have been disclosed by some smelters to be low-risk but disclosed by other smelters to be high-risk.
	"Secondary sources of material (non-mined)
Recycled Scrap (R/S)	Gold only: Those followed by (HR) have been disclosed by refiners to be high-risk. Those followed with an ** have been disclosed by some refiners to be low-risk but disclosed by other refiners to be high-risk."

Known Countries from which Conformant Gold Refiners Source

CC	Tanzania
Low Risk (LR)	Benin, Brazil, Canada, Chile, Guyana, India, Japan, Papua New Guinea, Peru, Philippines, South Africa, Sweden, Uzbekistan
High Risk (HR)	Brazil, Colombia, Nicaragua, Niger, South Africa, Tanzania, Vietnam, Zimbabwe
Recycled Scrap (R/S)	Anguilla, Antigua and Barbuda, Andorra, Australia, Austria, Aruba, Bahamas, Bangladesh (HR), Barbados, Belgium, Benin, Bosnia and Herzegovina, Brazil, Bulgaria, Burkina Faso (HR), Cameroon (HR), Canada, Cayman Islands, Chile, China, Chinese Taipei, Colombia, Costa Rica, Côte d'Ivoire, Curacao, Czech Republic, Denmark, Dominica, Dominican Republic, Ecuador (HR), Egypt (HR), El Salvador (HR), Estonia, Finland, France, Germany, Greece, Grenada, Guatemala (HR), Honduras (HR), Hong Kong, Hungary, India, Indonesia, Ireland, Israel, Italy, Jamaica (HR), Japan, Jordan, Korea, Republic of, Lithuania, Luxembourg, Malaysia, Mali (HR), Mexico, Netherlands, New Zealand, Niger (HR), Nigeria (HR), Norway, Oman, Panama, Peru, Philippines, Poland, Portugal, Puerto Rico (HR), Romania, Saint Kitts and Nevis, Saint Lucia, Saint Vincent and Grenadines, Senegal, Serbia, Singapore, Sint Maarten, Slovakia, Slovenia, South Africa, Spain, Sri Lanka, Sweden, Switzerland, Thailand, Trinidad and Tobago, Turkey, United Arab Emirates, United Kingdom, United States of America, Uruguay, Uzbekistan, Venezuela (HR), Vietnam

Known Countries from which LBMA Good Delivery List Refiners Source - Mined Material (Provided by LBMA)

All COI	Argentina, Australia, Azerbaijan, Bolivia (Plurinational State of), Bosnia and Herzegovina, Belgium, Brazil, Bulgaria, Burkina Faso, Cambodia, Canada, Chile, China, Colombia, Côte d'Ivoire, Dominican Republic, Ecuador, Egypt, Eswatini, Fiji, Finland, France, French Guiana, Georgia, Germany, Ghana, Greece, Guinea, Guyana, Honduras, Hong Kong, Italy, Indonesia, Japan, Kazakhstan, Kenya, Korea, Republic of, Kyrgyzstan, Lao People's Democratic Republic, Liberia, Madagascar, Malaysia, Mali, Mauritania, Mexico, Mongolia, Morocco, Mozambique, Namibia, New Zealand, Nicaragua, Nigeria, Panama, Papua New Guinea, Peru, Philippines, Saudi Arabia, Senegal, Slovakia, Solomon Islands, South Africa, Spain, Sudan, Suriname, Sweden, Tajikistan, Turkey, United States of America, Uzbekistan
CC	Tanzania, Zambia
DRC	Congo, Democratic Republic of the

Known Countries from which LBMA Good Delivery List Refiners Source - Recycled Material (Provided by LBMA)

All COI	Albania, Algeria, Argentina, Andorra, Australia, Austria, Azerbaijan, Bangladesh, Belgium, Bosnia and Herzegovina, Brazil, Bulgaria, Burkina Faso, Cameroon, Canada, Chile, China, Chinese Taipei, Colombia, Costa Rica, Côte d'Ivoire, Croatia, Czech Republic, Denmark, Ecuador, Egypt, El Salvador, Estonia, Ethiopia, Finland, France, Georgia, Germany, Ghana, Greece, Guinea, Honduras, Hong Kong, Hungary, Iceland, India, Indonesia, Ireland, Israel, Italy, Jamaica, Japan, Jordan, Kazakhstan, Kenya, Korea (Republic of), Kuwait, Kyrgyzstan, Latvia, Lebanon, Liechtenstein, Lithuania, Luxembourg, Macao, Malaysia, Malta, Mexico, Mongolia, Moldova (Republic of), Morocco, Netherlands, New Zealand, Nicaragua, Nigeria, Norway, Panama, Peru, Philippines, Poland, Portugal, Romania, Serbia, Singapore, Slovakia, Slovenia, South Africa, Spain, Sweden, Switzerland, Tajikistan, Thailand, Timor-Leste, Togo, Trinidad and Tobago, Tunisia, Turkey, United Arab Emirates, United Kingdom, United States of America, Uruguay, Uzbekistan, Viet Nam, Zimbabwe
CC	Angola, Uganda, Zambia

Known Countries from which RJC Refiners Source - Mined Material (Provided by RJC)

All COI	Argentina, Azerbaijan, Botswana, Brazil, Burkina Faso, Canada, Chile, Colombia, Côte d'Ivoire, Dominican Republic, Ecuador, Finland, Georgia, French Guiana, Guinea, Ghana, Honduras, Mali, Mexico, Mongolia, Morocco, Nicaragua, Nigeria, Papua New Guinea, Peru, Philippines, Senegal, South Africa, Suriname, Sweden, Tajikistan, United States of America, Zimbabwe
CC	Tanzania

Known Countries from which RJC Refiners Source - Recycled Material (Provided by RJC)

All COI	Australia, Austria, Belgium, Brazil, Bulgaria, Canada, Chile, China, Chinese Taipei, Czech Republic, Denmark, Dominican Republic, Ecuador, Estonia, Finland, France, Germany, Greece, Hong Kong, Hungary, Iceland, Indonesia, Ireland, Israel, Italy, Japan, Jordan, Kazakhstan, Korea (Republic of), Latvia, Lebanon, Liechtenstein, Lithuania, Luxembourg, Malaysia, Mexico, Monaco, Netherlands, Norway, Panama, Philippines, Poland, Portugal, Romania, Serbia, Singapore, Slovakia, South Korea, Spain, Sweden, Switzerland, Tajikistan, Thailand, Turkey, Ukraine, United Arab Emirates, United Kingdom, United States of America, Uzbekistan, Vietnam
---------	--

Known Countries from which Conformant Tantalum Smelters Source

Please refer to the Data Key above for descriptions of each RCOI designation

CC	Rwanda, Burundi
DRC	Congo (Democratic Republic of the)
Low Risk (LR)	Australia, Brazil, China, France, Liberia, Madagascar, Mozambique, Nigeria, Sierra Leone, Spain, Thailand, United States of America
High Risk (HR)	Brazil, Burundi, Congo (Democratic Republic of the), Ethiopia, Liberia, Mozambique, Nigeria, Rwanda, Zimbabwe
Recycled Scrap (R/S)	Austria, Brazil, Belarus, Canada, China, Chinese Taipei, Czech Republic, El Salvador, Estonia, France, Germany, Hong Kong, India, Indonesia, Ireland, Israel, Japan, Kazakhstan, Korea (Republic of), Malaysia, Mexico, Russia, Singapore, Thailand, United Kingdom, United States of America

Known Countries from which Conformant Tin Smelters Source

Please refer to the Data Key above for descriptions of each RCOI designation

CC	Burundi, Rwanda, Tanzania, Uganda
DRC	Congo (Democratic Republic of the)
Low Risk (LR)	Australia, Bolivia, Brazil, China, Indonesia, Laos, Malaysia, Mongolia, Myanmar, Namibia, Peru, Portugal, Spain, Vietnam
High Risk (HR)	Bolivia, Brazil, Burundi, Congo (Democratic Republic of the), Myanmar, Nigeria, Rwanda, Tanzania, Thailand, Zambia, Uganda
Recycled Scrap (R/S)	Argentina, Australia, Austria, Belgium, Brazil, Bulgaria, Canada, Chile, China, Chinese Taipei, Croatia, Cyprus, Czech Republic, Denmark, Egypt, Estonia, Finland, France, Germany, Greece, Hong Kong, Hungary, India, Indonesia, Ireland, Israel, Italy, Japan, Jordan, Korea (Republic of), Latvia, Lithuania, Luxembourg, Malaysia, Malta, Mexico, Morocco, Netherlands, New Zealand, Nigeria, Peru, Philippines, Poland, Portugal, Puerto Rico, Romania, Russia, Serbia, Singapore, Slovakia, Slovenia, South Africa, Spain, Sweden, Switzerland, Thailand, Tunisia, Turkey, Ukraine, United Arab Emirates, United Kingdom, United States of America, Uruguay

Known Countries from which Conformant Tungsten Industry–Conflict Minerals Council (TI-CMC) Smelters Source - Mined Material (Provided by TI-CMC)

All COI	Australia, Austria, Bolivia, Brazil, China, Kazakhstan, Malaysia, Mexico, Mongolia, Myanmar, Nigeria, Portugal, Russia, Spain, Thailand, United Kingdom, United States of America, Vietnam
CC	Burundi, Rwanda, Uganda, Tanzania
DRC	Congo (Democratic Republic of the)

Known Countries from which Conformant Tungsten Smelters Source

Please refer to the Data Key above for descriptions of each RCOI designation

CC	Burundi, Rwanda, Tanzania
DRC	Congo (Democratic Republic of the)
Low Risk (LR)	Australia, Bolivia, Brazil, China, Germany, India, Malaysia, Mongolia, Portugal, Spain, Thailand, United Kingdom, United States of America, Vietnam
High Risk (HR)	Bolivia, Burundi, Congo (Democratic Republic of the), Myanmar, Nigeria, Russia, Rwanda, Tanzania, Vietnam
Recycled Scrap (R/S)	Austria, Belgium, Brazil, Canada, China, Chinese Taipei, France, Egypt, Germany, India, Indonesia, Ireland, Israel, Japan, Korea (Republic of), Laos, Luxembourg, Malaysia, Netherlands, Singapore, South Africa, Spain, Switzerland, Thailand, Turkey, Ukraine, United Arab Emirates, United Kingdom, United States of America, Vietnam

Known Countries from which Conformant Cobalt Refiners Source

Please refer to the Data Key above for descriptions of each RCOI designation

CC	Zambia
DRC	Congo (Democratic Republic of the)
Low Risk (LR)	Australia, Brazil, Canada, China, Finland, France, Indonesia, Germany, Madagascar, Morocco, New Caledonia, Papua New Guinea, Philippines, Spain, Turkey, United States of America
High Risk (HR)	Congo (Democratic Republic of the), Mexico, Russia, South Africa, Zambia, Zimbabwe
Recycled Scrap (R/S)	Australia, Austria, Canada, China, Chinese Taipei, Finland, France, Germany, Hong Kong, Hungary, India, Indonesia, Japan, Korea (Republic of), Malaysia, Singapore, United Kingdom, United States of America, Vietnam

© 2025 Responsible Business Alliance, Inc. All rights reserved.

* Source : RMI Database Export 2026-01-30

SAMSUNG